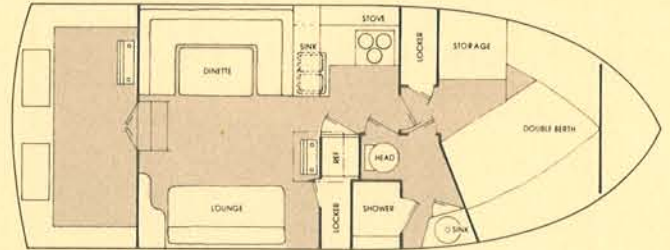
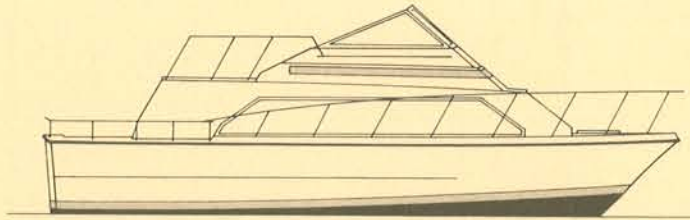


# CARVER MARINER

MODEL 2896



## PROFILE

<b>LENGTH</b> (center line) . . . . .	28'4"	8.64m
<b>BEAM</b> . . . . .	10'4"	3.15m
<b>WEIGHT</b> . . . . .	8,320 lb.	3,773kg
<b>HEIGHT</b> (above water) . . . . .	10'0"	3.05m
<b>CABIN HEAD ROOM</b> . . . . .	74"	1.88m

### PROPULSION SYSTEM

#### ENGINES/REDUCTIONS

Single 330 hp stern drive with 2:1 reduction  
 Single 270 hp inboard with 2.05:1 direct couple V-drive  
 Twin inboards to 440 hp with 1.46:1 direct couple V-drive

**SHAFTS**     Single inboard — 1-3/8" stainless steel  
                   Twin inboard — 1-1/4" stainless steel

**STRUTS**     Bronze

**RUDDERS**    Bronze — 1-1/4" stainless steel shaft

### FUEL SYSTEM

Single I/O . . . . . 112 gal. (single tank)  
 Single inboard . . . . . 114 gal. (twin 57 gal tanks)  
 Twin inboard . . . . . 114 gal. (twin 57 gal tanks)  
 Optional . . . . . N/A

### WATER SYSTEM

Pressure hot and cold water . . . . . 40 gal.     151L

### RAILS

Standard:     Rails — stainless steel  
                   Fittings — zamac  
                   Taffrail — teak

Optional:     Deluxe Rail Fittings — stainless steel

### WINDSHIELD/WINDOWS

Aluminum frames with laminated safety glass

### CLEATS

Stainless steel (includes 4 spring line cleats)

## STANDARD EQUIPMENT

### EXTERIOR

- Anti-fouling hull bottom
- Bow rail and teak taffrail with gates
- Deck hardware: chocks, cleats, and chain deck pipe
- Command bridge, swivel and companion seats, aft bridge bench seat, ladder and railings
- Fore deck hatch (Bomar)
- Lights, anchor and navigation
- Windshield wiper
- Window screens

### CONTROL CONSOLE

- Fuel gauge(s)
- Lights, instrument
- Oil pressure gauge(s)
- Tachometer(s)
- Voltmeter(s)
- Temperature gauge(s)

### FUNCTIONAL/SAFETY

- Two automatic bilge pumps
- Bilge blower
- Horn, single trumpet
- Mufflers (inboards)

### ELECTRICAL

- Alternator(s)
- Two batteries
- Dockside wiring w/50' shore cables

### GALLEY

- Refrigerator, 12V/110V combination (Model DE400)
- Sink
- Stove
- Pressure hot and cold water system/12 gal. heater

### INTERIOR

**Colors: Blue, Natural**

- Dinette (converts to double berth)
- Lounge (converts to upper & lower berth)
- Carpeting
- Hulliner
- Draperies
- Cushions
- Headliner

### HEAD

- Mirror
- Shower
- Vanity with sink

### MISCELLANEOUS

- Shipping cradle

## OPTIONAL EQUIPMENT

- Vinyl convertible top set
- Side curtain screen
- Self contained head
- Lectra San head
- Self-contained head with auxiliary holding tank
- Spotlight, manual
- Electric controlled spotlight, single station
- Electric stove with oven
- Cassette stereo with AM/FM stereo
- Teak boarding ladder
- Electric/hydraulic trim tabs
- Deluxe saltwater hardware set
- Portable fire extinguisher
- Double trumpet horn
- Electric wiper, passenger side
- Cigar lighter
- Engine hour meter(s)
- Compass
- Fresh water cooling for engines
- Engine heat exchanger for hot water system
- 30 amp grounded household adaptor
- Swim platform with ladder
- Battery charger
- Propane stove with oven
- Pompanette swivel seats (in lieu of standard)
- Air conditioner with reverse cycle heat

- Single 270 hp Crusader V-drive (2.05:1 reduction)
- Twin 220 hp Crusader V-drives (1.46:1 reduction)
- Single 330 hp MerCruiser stern drive (2:1 reduction)
- Twin 302-4 Pleasurecraft V-drives (1.46:1 reduction)

## PERFORMANCE DATA

### Model: 2896 Mariner

**Power** ..... Single 270 Crusader  
**Gear Reduction** ..... 2.0:1  
**Fuel Load** ..... 114 gal.  
**Water Load** ..... 40 gal.  
**Passenger Weight** ..... 180 lb.  
**Test Date** ..... 6/7/77  
**Propeller(s)** ..... 18 x 21 Michigan Dyna Quad  
**ETR#** ..... 896777  
**Wind** ..... Calm  
**Temperature** ..... 80°F  
**Course** ..... E-W  
**Altitude** ..... 590 ft. above sea level

**Power** ..... Twin 302-4 Pleasurecraft  
**Gear Reduction** ..... 1.46:1  
**Fuel Load** ..... 114 gal.  
**Water Load** ..... 40 gal.  
**Passenger Weight** ..... 350 lb.  
**Test Date** ..... 8/12/75  
**Propeller(s)** ..... 16 x 15 Michigan Wheel Dyna-Jets  
**ETR#** ..... 8981275  
**Wind** ..... None  
**Temperature** ..... 80°F  
**Course** ..... SE-NW  
**Altitude** ..... 590 ft. above sea level

RPM	Trim Angle	Radar Speed (MPH)	Fuel Consumption (GPH)
1000		5.0	.5
1500		7.2	2.0
2000		9.0	4.0
2500		13.4	6.0
3000		18.2	9.5
3500		24.2	13.0
4000		27.0	15.0
4150		28.8	17.0

RPM	Trim Angle	Radar Speed (MPH)	Fuel Consumption (GPH)
1000	0°	6.6	2.0
1500	.3°	8.9	4.5
2000	5.25°	12.7	9.5
2500	5.25°	18.3	12.0
3000	3.5°	24.4	18.0
3500	3.0°	27.3	22.0
4000	3.0°	30.9	32.0
4050	3.0°	31.2	33.0

**Recommended Cruising Speed:**  
 1000-1500 rpm low speed cruise  
 3000-3400 rpm high speed cruise

**Recommended Cruising Speed:**  
 1500-1700 rpm low speed cruise  
 2800-3000 rpm high speed cruise

The results above were experienced by the specific unit tested.  
 Different boats, engines or test conditions could result in varied performance.

# CARVER

## The Classic American Adventure

Carver Boat Corporation \* Pulaski, Wisconsin 54162 \* Telephone (414) 822-3214