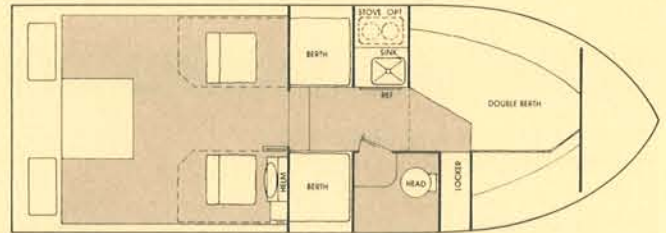
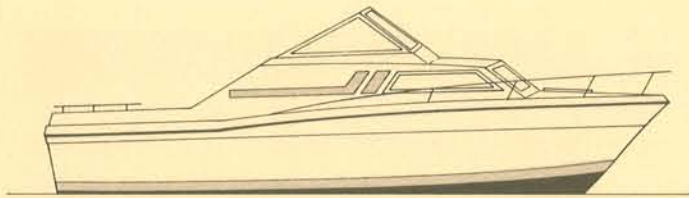


CARVER MONTEGO

MODEL 2357



PROFILE

LENGTH	23'0"	7m
BEAM	8'0"	2.44m
WEIGHT	4,000 lb.	1,814 kg
HEIGHT (above water)	6'10"	2.08m
CABIN HEAD ROOM	72"	1.83m

PROPULSION SYSTEM

ENGINES/REDUCTIONS

Single to 260 hp stern drive — gas
Single 130 hp turbocharged diesel

FUEL SYSTEM

Standard	74 gal.	280L
Optional	N/A	

WATER SYSTEM

Manual cold water 15 gal. 57L

RAILS

Standard: Rails — stainless steel
Fittings — zamac
Taffrail — teak
Optional: Deluxe rail fittings — stainless steel

WINDSHIELD/WINDOWS

Aluminum frames with laminated safety glass
(includes window screens)

CLEATS

Stainless steel (includes 2 spring line cleats)

STANDARD EQUIPMENT

EXTERIOR

- Bow rail and boarding handrails
- Deck hardware: chocks and cleats
- Single helm station
- Teak trim
- Foredeck hatch (Bomar)
- Lights, anchor and navigation
- Windshield wiper (helm)
- Pilot and companion seats
- Two pompanette swivel seats
- Teak glass racks
- Self bailing cockpit
- Anti skid decks
- Teak taffrail

CONTROL CONSOLE

- Fuel gauge
- Lights, instrument
- Oil pressure gauge
- Tachometer
- Voltmeter
- Temperature gauge

FUNCTIONAL/SAFETY

- Bilge pump
- Bilge blower
- Horn, single trumpet

ELECTRICAL

- Alternator
- Battery

GALLEY

- Ice box
- Stainless steel sink
- Manual water system
- Fold-up snack counters

INTERIOR

Colors: Blue, Natural

- Cushions
- Drapes
- Headliner
- Hanging locker

HEAD

- Enclosed private head compartment
- Mirror

OPTIONAL EQUIPMENT

- | | | |
|---|--|--|
| <ul style="list-style-type: none"> ● Convertible bunk seats ● Seat storage lockers ● Vinyl convertible top set ● Fore deck hatch screen ● Self contained head ● Dual voltage refrigerator (requires dockside power) ● Alcohol stove ● Alcohol/electric stove ● Two automatic bilge pumps | <ul style="list-style-type: none"> ● Cassette stereo with FM radio ● Teak boarding ladder ● Electric/hydraulic trim tabs ● Extra battery (one standard) ● 110 Volt, 30 AMP dockside wiring ● Deluxe saltwater hardware ● Shipping/storage cradle ● Fire extinguisher ● Double trumpet electric horn | <ul style="list-style-type: none"> ● Extra windshield wiper — passenger ● Electric cigar lighter ● Compass ● Engine hour meter ● Fresh water cooling — MerCruiser ● Dockside 30 AMP adaptor ● Swim platform ● Anti-fouling hull bottom |
|---|--|--|

ENGINE OPTIONS

- | | |
|--|---|
| <ul style="list-style-type: none"> ● Single 225 hp Volvo stern drive ● Single 260 hp Volvo stern drive ● Single 228 hp MerCruiser stern drive | <ul style="list-style-type: none"> ● Single 260 hp MerCruiser stern drive ● Single 230 hp OMC stern drive ● Single AQD 40 Volvo diesel stern drive |
|--|---|

PERFORMANCE DATA

Model: 2357 Montego

Power 225 Volvo I.O.
Gear Reduction 1.61:1
Fuel Load 75 gal.
Water Load 15 gal.
Passenger Weight 170 lb.
Test Date 8/16/78
Propeller(s) 16 x 17 LH
ETR# 3581678
Wind None
Temperature 78°F
Course E-W
Altitude 590 ft. above sea level

Power 260 MerCruiser
Gear Reduction 1.5:1
Fuel Load 75 gal.
Water Load 15 gal.
Passenger Weight 170 lb.
Test Date 8/08/78
Propeller(s) 15½ x 19 MerCruiser RH
ETR# 358878
Wind S-SW 20 to 25 MPH
Temperature 78°F
Course N-S
Altitude 590 ft. above sea level

RPM	Trim Angle	Radar Speed (MPH)	Fuel Consumption (GPH)
1000	.5°	5.4	.75
1500	1.75°	7.9	1.75
2000	5.75°	10.1	3.5
2500	5.5°	16.4	4.75
3000	3.5°	23.4	6.5
3500	2.75°	30.4	8.75
4000	2.25°	36.3	12.5

RPM	Trim Angle	Radar Speed (MPH)	Fuel Consumption (GPH)
1000	.5°	4.5	.75
1500	2.75°	7.4	2.5
2000	5.75°	12.3	4.75
2500	4.0°	22.9	5.75
3000	2.75°	30.0	8.25
3500	2.5°	35.4	11.75
4000	2.25°	40.1	17.0
4450	2.0°	43.1	18.0

Recommended Cruising Speed:

1300-1500 rpm low speed cruise
2800-3200 rpm high speed cruise

Recommended Cruising Speed:

1300-1500 rpm low speed cruise
2600-3000 rpm high speed cruise

The results above were experienced by the specific unit tested.
Different boats, engines or test conditions could result in varied performance.

CARVER

The Classic American Adventure

Carver Boat Corporation * Pulaski, Wisconsin 54162 * Telephone (414) 822-3214