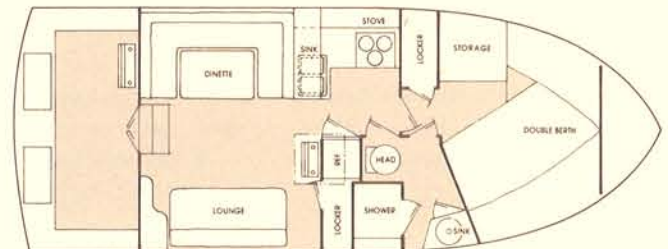
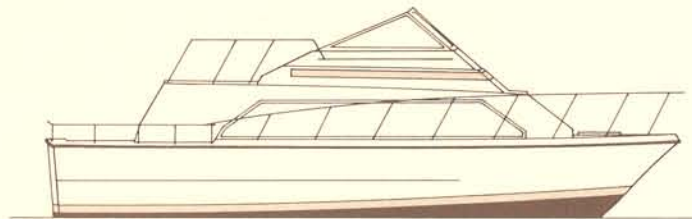


# CARVER MARINER

## MODEL 3396



### PROFILE

LENGTH (Overall)	32'9"	9.98m
BEAM	12'0"	3.66m
DRAFT	38-3/4"	
HEIGHT (Clearance above water)	11'5"	3.48m
DISPLACEMENT	11,620 lb.	5,269kg
CABIN HEADROOM	77"	1.96m
SLEEPING CAPACITY	Standard 6 Optional 8	

### FUEL SYSTEM

Standard capacity	145 gal.	549L
Optional additional capacity	57 gal.	242L

### WATER SYSTEM

Pressure hot & cold water, capacity	82 gal.	310.4L
-------------------------------------	---------	--------

### STANDARD EQUIPMENT

#### EXTERIOR

- Anti-fouling bottom paint
- Bow rail and teak taffrail
- Deck hardware: chocks, cleats, and chain deck pipe
- Spring line cleats, 4
- Command bridge with windshield, ladder and railings
- Foredeck hatch with screen
- Lights, anchor and navigation
- Windshield wiper, electric, at helm
- Window screens
- Pedestal slide and swivel pilot seat
- Companion seat with storage
- Two convertible bunk seats
- Aft deck storage areas with fiberglass covers

#### CONTROL CONSOLE

- Fuel gauge
- Instrument lights
- Oil pressure gauges
- Tachometers
- Voltmeter
- Temperature gauges

#### FUNCTIONAL/SAFETY

- Two automatic electric bilge pumps
- Bilge blower
- Horn, single trumpet
- Mufflers (gas engines)
- Electric/hydraulic trim tabs

#### ELECTRICAL

- Alternators
- Two batteries with selector switch
- 110 Volt 30 Amp dockside wiring with 50' shore power cable
- Cabin lighting, 12 VDC

#### GALLEY

- Upright refrigerator-freezer, 110 VAC-12 VDC
- Dual basin stainless steel sink
- Stove, 3 burner electric with oven
- Pressure hot and cold water system/12 gal. heater

#### INTERIOR

##### Colors: Blue or Natural

- Dinette (converts to double berth)
- Sofa (converts to double berth)
- Carpeting
- Draperies
- Cushions
- Headliner
- Hull liner

#### HEAD

- Mirror
- Fiberglass shower stall
- Vanity with stainless steel sink

#### MISCELLANEOUS

- Shipping/storage cradle

## OPTIONAL EQUIPMENT

- Spotlight, manual or electric control
- Engine synchronizer
- Engine hour meter
- Illuminated compass
- Dual trumpet horn
- Electric windshield wiper, companion
- Electric cigar lighter with light
- Engine alarm, audible
- Fresh water cooling for gas engines (dsl. std.)
- Dual 110V 30 Amp dockside wiring with 50' shore cord (in addition to standard dockside)
- Dockside adaptor(s), 30 Amp
- Generator -- gas or diesel
- Fresh water cooling -- gas generator
- Battery charging system, 20 Amp
- Cockpit pressure seawater washdown
- Shore water pressure connector
- Rear deck fiberglass storage/bait well
- Vinyl convertible top set
- Side curtain screens
- Air conditioning with reverse cycle heat, 16,000 BTU
- Engine heat exchanger for hot water system
- Self-contained head
- Marine head with Lectra San
- Self-contained head with auxiliary holding tank
- Decorator pillows
- Cassette stereo with AM/FM radio
- Modular AM/FM receiver with stereo cassette player
- Blender, flush counter top mount
- Three burner propane stove with oven
- Microwave oven and three burner electric stove
- Teak boarding ladder
- Fiberglass swim platform with ladder
- Bow pulpit, fiberglass
- 57 gallon auxiliary fuel tank
- Fire extinguisher, 4#

## ENGINE OPTIONS

- Twin Model 351-4 Pleasurecraft V-Drives (2.05:1 reductions)
- Twin Model 270 Crusader V-Drives (2.05:1 reductions)
- Twin Model TMD 40 Volvo Turbocharged Diesel V-Drives

### UNDERWATER GEAR

- Propeller Shafts: 1-3/8" dia. stainless steel
- Rudders: Bronze with 1-1/4" stainless steel rudder shafts
- Struts: Heavy duty bronze alloy

## PERFORMANCE DATA

### Model: 3396 Mariner

Power . . . . . Twin Model 351-4 Pleasurecraft V-Drives  
 Gear Reduction . . . . . 2.05:1  
 Fuel Load . . . . . 55 gal.  
 Water Load . . . . . 75 gal.  
 Passenger Weight . . . . . 310 lb.  
 Propellers . . . . . 18 x 19 Michigan Quadra Jets  
 Engineering Test . . . . . No. 3982476  
 Wind . . . . . N-E  
 Temperature . . . . . 85 degrees F.  
 Altitude . . . . . 590 ft. above sea level  
 Other Information: Boat fully equipped including 7.5 KW Kohler generator, air conditioning, aux. fuel tank, 40 gal. holding tank.

RPM	Trim Angle	Radar Speed (MPH)	Fuel Consumption (GPH)
1000	---	---	---
1500	1.0	7.2	5.0
2000	2.5	8.9	7.0
2500	4.0	10.3	9.0
3000	6.5	15.3	14.0
3500	6.0	20.8	18.0
3500*	4.0	23.0	17.0
4000	3.0	27.3	24.0
4600	3.0	31.5	37.0

\*Trim tabs down

The results above were experienced by the specific unit tested. Different boats, engines or test conditions could result in varied performance.

# CARVER