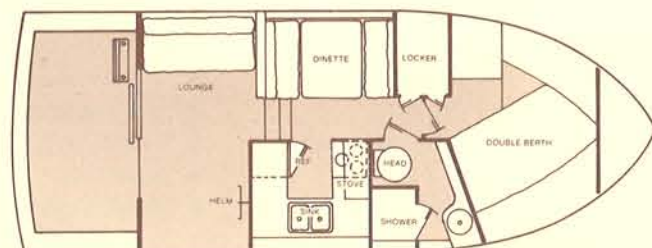
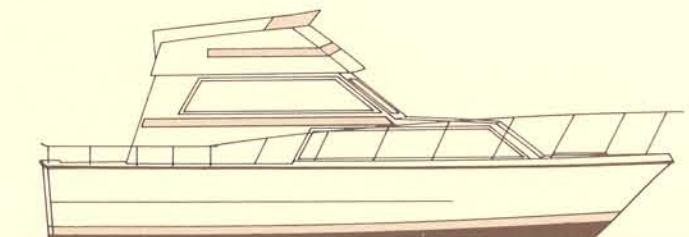


CARVER VOYAGER

MODEL 3326



PROFILE

LENGTH (Overall)	32'9"	9.98m
BEAM	12'0"	3.66m
DRAFT	38-3/4"	
HEIGHT (Clearance above water)	11'9"	3.58m
DISPLACEMENT	12,600 lb.	5,714kg
CABIN HEADROOM	75"	1.90m
SLEEPING CAPACITY	6	

FUEL SYSTEM

Capacity 200 gal. 757L

WATER SYSTEM

Pressure hot & cold water, capacity 82 gal. 312L

STANDARD EQUIPMENT

EXTERIOR

- Anti-fouling bottom paint
- Bow rail and teak taffrail with gates
- Deck hardware: chocks, cleats, and chain deck pipe
- Spring line cleats, 4
- Command bridge with venturi windshield, swivel pilot seat, companion seating, ladder and railings
- Foredeck hatch with screen
- Lights, anchor and navigation
- Teak trim
- Window screens

CONTROL CONSOLE

- Fuel gauge
- Instrument lights
- Oil pressure gauges
- Tachometers
- Voltmeter
- Temperature gauges

FUNCTIONAL/SAFETY

- Two automatic electric bilge pumps
- Bilge blower
- Horn, single trumpet
- Electric/hydraulic trim tabs
- Mufflers (gas engines)

ELECTRICAL

- Alternators
- Two batteries with selector switch
- 110V 30 Amp dockside wiring with 50' shore power cable

GALLEY

- Upright refrigerator-freezer, 110 VAC-12 VDC
- Dual basin stainless steel sink
- 3 burner electric stove with oven
- Pressure hot and cold water system/12 gal. heater

INTERIOR

Colors: Blue or Natural

- Dinette (converts to double berth)
- Sofa (converts to double berth)
- Carpeting
- Drapes
- Cushions
- Headliner
- Hull liner
- Sliding glass door with screen

HEAD

- Mirror
- Fiberglass shower stall
- Vanity with stainless steel sink

MISCELLANEOUS

- Shipping/storage cradle

OPTIONAL EQUIPMENT

- Lower station, includes windshield wipers
- Engine synchronizer
- Fresh water cooling for gas engines (dsl. std.)
- Engine alarm, audible
- Compass, illuminated
- Spotlight, manual control
- Spotlight, electric control
- Cigar lighter with light
- Dual trumpet electric horn
- Engine hour meter(s)
- Bimini top with full enclosure
- Bridge cover
- Aft deck lounge seat with storage
- Dual 110V 30 Amp dockside wiring with 50' shore cord (in addition to standard dockside)
- 30 Amp dockside adaptor(s)
- Generator -- gas or diesel
- Fresh water cooling for gas generator (std. on diesel)
- Battery charger system, 20 Amp
- Engine heat exchanger for hot water system
- Cockpit pressure seawater washdown
- Shore water pressure connector
- Decorator pillows
- Barrel chair
- Blender, countertop flush mount
- Propane stove with oven
- Microwave oven and 3-burner electric stove
- Air conditioning with reverse cycle heat, 16,000 BTU
- Cassette stereo with AM/FM radio
- Modular AM/FM receiver with stereo cassette player
- Fire extinguisher, 4#
- Self contained head
- Marine head with Lectra San
- Self contained head with holding tank
- Teak boarding ladder
- Fiberglass swim platform with ladder
- Bow pulpit, fiberglass

ENGINE OPTIONS

- Twin Model 351-4 Pleasurecraft V-Drives (2.05:1 reductions)
- Twin Model 270 Crusader V-Drives (2.05:1 reductions)
- Twin Model TMD 40 Volvo Turbocharged Diesel V-Drives

UNDERWATER GEAR

- Propeller Shafts:
 - 1-3/8" dia. stainless steel
- Rudders:
 - Bronze with 1-1/4" stainless steel rudder shafts
- Struts:
 - Heavy duty bronze alloy

PERFORMANCE DATA

Model: 3326 Voyager

Power Twin Model 270 Crusader V-Drives
 Gear Reduction 2.05:1
 Fuel Load 200 gal.
 Water Load 70 gal.
 Passenger Weight 360 lb.
 Propellers 18 x 19 Michigan Dyna Quads
 Engineering Test No. 3242678
 Wind N 0-5 mph
 Temperature 68 degrees F.
 Altitude 590 ft. above sea level

RPM	Trim Angle	Radar Speed (MPH)	Fuel Consumption (GPH)
1000	.5	4.4	1.0
1500	1.0	7.2	3.0
2000	2.25	8.8	6.0
2500	5.25	11.3	14.0
3000	5.75	18.4	23.0
3500	4.25	26.4	27.5
4000	4.0	28.3	31.0
4350	4.0	30.0	33.0

The results above were experienced by the specific unit tested. Different boats, engines or test conditions could result in varied performance.

CARVER