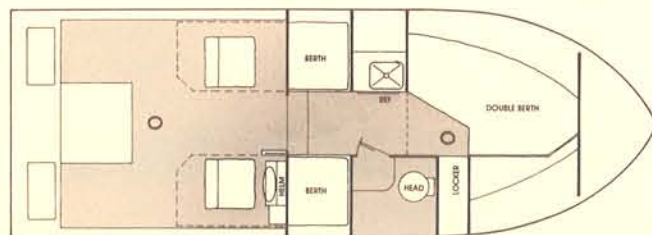
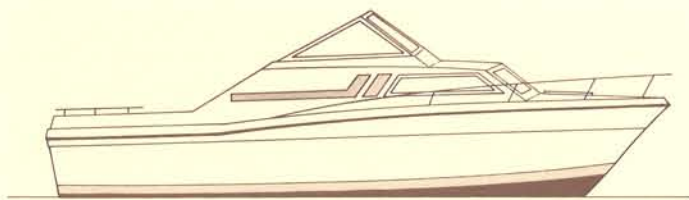


CARVER MONTEGO

MODEL 2357



PROFILE

LENGTH	23'0"	7m
BEAM	8'0"	2.44m
DRAFT	34"	
HEIGHT (Clearance above water)	6'10"	2.08m
DISPLACEMENT	4,000 lb.	1,814kg
CABIN HEADROOM	72"	1.83m
SLEEPING CAPACITY	Standard 4	
	Optional 5	

FUEL SYSTEM

Capacity	74 gal.	280L
	Diesel 70 gal.	265L

WATER SYSTEM

Manual cold water	15 gal.	57L
-----------------------------	---------	-----

STANDARD EQUIPMENT

EXTERIOR

- Bow rail and boarding handrails
- Teak taffrail
- Deck hardware: mooring bitt and 2 stern cleats
- Spring line cleats, 2
- Teak trim
- Foredeck hatch
- Lights, anchor and navigation
- Windshield wiper, electric (helm)
- Pilot and companion seats, swivel and slide
- Teak glass racks

CONTROL CONSOLE

- Fuel gauge
- Instrument lights
- Oil pressure gauge
- Tachometer
- Voltmeter
- Temperature gauge

FUNCTIONAL/SAFETY

- Automatic electric bilge pump
- Bilge blower
- Horn, single trumpet
- Window screens
- Fiberglass inner liner
- Anti-skid decks
- Self-bailing cockpit

ELECTRICAL

- Alternator
- Battery with selector switch
- Cabin lighting, 12 VDC

GALLEY

- Ice box
- Stainless steel sink
- Manual water system
- Fold-up snack counters

COCKPIT

- Two removable transom wells with teak covers

INTERIOR

Colors: Blue or Natural

- Cushions
- Drapes
- Headliner
- Hull liner
- Hanging locker
- Forward berth filler cushion
- Quarter berths with two cushions
- Dinette table (also mounts in cockpit)

HEAD

- Enclosed private head compartment

OPTIONAL EQUIPMENT

- Anti-fouling bottom paint
- Fresh water cooling, MerCruiser stern drive
- Engine hour meter
- Electric/hydraulic trim tabs
- Engine alarm, audible, MerCruiser
- Compass, illuminated
- Electric cigar lighter with light
- Electric windshield wiper, companion
- Dual trumpet electric horn
- Convertible bunk seats
- Seat storage boxes
- Vinyl convertible top set
- Side curtain screens (pair)
- Foredeck hatch screen
- 110 Volt 30 Amp dockside wiring with 50' shore power cord
- Voltmeter/ammeter for 110V dockside wiring
- Dockside adaptor 30 Amp
- Additional battery (one standard)
- Self contained head
- Cockpit pressure seawater washdown
- Decorator pillows
- Cassette stereo with AM/FM radio
- Dual voltage refrigerator 110 VAC-12 VDC (requires dockside power)
- Portable alcohol stove
- Fiberglass swim platform
- Fire extinguisher, 4#
- Additional automatic electric bilge pump
- Shipping/storage cradle

ENGINE OPTIONS

- Single Model 200 Volvo Stern Drive
- Single Model 485 MerCruiser Stern Drive
- Single Model 225 Volvo Stern Drive
- Single Model 228 MerCruiser Stern Drive
- Single Model 230 OMC Stern Drive
- Single Model 260 Volvo Stern Drive
- Single Model 260 MerCruiser Stern Drive
- Single Model 260 OMC Stern Drive
- Single Model AQD 40 Volvo Turbocharged Diesel Stern Drive

Displacement Only

- Single Model 120 Volvo Stern Drive
- Single Model 120 MerCruiser Stern Drive

PERFORMANCE DATA

Model: 2357 Montego

Power Model 225 Volvo Stern Drive
 Gear Reduction 1.61:1
 Fuel Load 74 gal.
 Water Load 15 gal.
 Passenger Weight 170 lb.
 Propeller 16 x 17 LH
 Engineering Test No. 3581678
 Wind None
 Temperature 78 degrees F.
 Altitude 590 ft. above sea level

Power Model 260 MerCruiser Stern Drive
 Gear Reduction 1.5:1
 Fuel Load 74 gal.
 Water Load 15 gal.
 Passenger Weight 170 lb.
 Propeller 15-1/2 x 19 MerCruiser RH
 Engineering Test No. 358878
 Wind S-SW 20 to 25 mph
 Temperature 78 degrees F.
 Altitude 590 ft. above sea level

RPM	Trim Angle	Radar Speed (MPH)	Fuel Consumption (GPH)
1000	.5	5.4	.75
1500	1.75	7.9	1.75
2000	5.75	10.1	3.5
2500	5.5	16.4	4.75
3000	3.5	23.4	6.5
3500	2.75	30.4	8.75
4000	2.25	36.3	12.5

RPM	Trim Angle	Radar Speed (MPH)	Fuel Consumption (GPH)
1000	.5	4.5	.75
1500	2.75	7.4	2.5
2000	5.75	12.3	4.75
2500	4.0	22.9	5.75
3000	2.75	30.0	8.25
3500	2.5	35.4	11.75
4000	2.25	40.1	17.0
4450	2.0	43.1	18.0

The results above were experienced by the specific unit tested.
 Different boats, engines or test conditions could result in varied performance.

CARVER