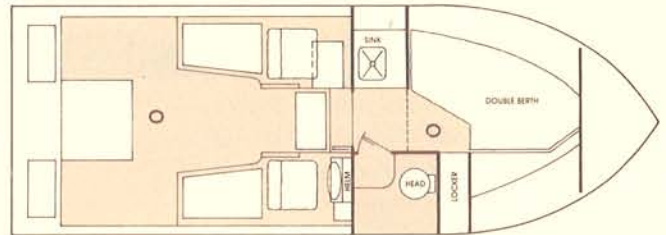
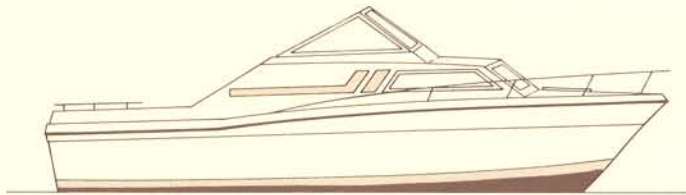


CARVER OFFSHORE

MODEL 2347



PROFILE

LENGTH (Overall)	23'0"	7m
BEAM	8'0"	2.44m
DRAFT	34"	
HEIGHT (Clearance above water)	6'10"	2.08m
DISPLACEMENT	4,000 lb.	1,814kg
CABIN HEADROOM	72"	1.83m
SLEEPING CAPACITY	Standard 2 Optional 3	

FUEL SYSTEM

Capacity	74 gal.	280L
	Diesel 70 gal.	265L

WATER SYSTEM

Manual cold water	15 gal.	57L
-----------------------------	---------	-----

STANDARD EQUIPMENT

EXTERIOR

- Bow rail and boarding handrails
- Deck hardware: mooring bitt and 2 stern cleats
- Spring line cleats, 2
- Teak trim
- Foredeck hatch
- Lights, anchor and navigation
- Windshield wiper (helm)
- Pilot and companion seats, swivel and slide
- Teak glass rack
- Teak taffrail

CONTROL CONSOLE

- Fuel gauge
- Instrument lights
- Oil pressure gauge
- Tachometer
- Voltmeter
- Temperature gauge

FUNCTIONAL/SAFETY

- Automatic electric bilge pump
- Bilge blower
- Horn, single trumpet
- Window screens
- Fiberglass inner liner
- Anti-skid decks
- Self-bailing cockpit

ELECTRICAL

- Alternator
- Battery with selector switch
- Electronics storage shelf (above galley)
- Cabin lighting, 12 VDC

GALLEY

- Stainless steel sink
- Manual water system
- Fold-up snack counter
- Large storage locker

INTERIOR

Colors: Blue or Natural

- Cushions
- Drapes
- Headliner
- Hull liner
- Hanging locker
- Forward berth filler cushion

HEAD

- Enclosed private head compartment
- Storage compartment

COCKPIT

- Two removable storage transom wells with teak covers
- Two fish/bait wells with sea cocks
- Two tackle storage bins, lockable
- Cockpit courtesy lights
- Two rod holders
- Large below deck storage area

OPTIONAL EQUIPMENT

- Electric/hydraulic trim tabs
- Engine alarm, audible, MerCruiser
- Fresh water cooling, MerCruiser stern drive
- Extra windshield wiper, companion
- Engine hour meter
- Illuminated compass
- Cigar lighter with light
- Dual trumpet electric horn
- Additional battery (one standard)
- Convertible bunk seats
- Vinyl convertible top set
- Side curtain screens (pair)
- Foredeck hatch screen
- Cockpit pressure seawater washdown
- Self contained head
- Decorator pillows
- Cassette stereo with AM/FM radio
- Dinette table with 2 mounting locations
- Portable alcohol stove
- Fiberglass swim platform
- Fire extinguisher, 4#
- Additional automatic electric bilge pump forward
- Anti-fouling bottom paint
- Shipping/storage cradle

ENGINE OPTIONS

- Single Model 200 Volvo Stern Drive
 - Single Model 485 MerCruiser Stern Drive
 - Single Model 225 Volvo Stern Drive
 - Single Model 228 MerCruiser Stern Drive
 - Single Model 230 OMC Stern Drive
 - Single Model 260 Volvo Stern Drive
 - Single Model 260 MerCruiser Stern Drive
 - Single Model 260 OMC Stern Drive
 - Single Model AQD 40 Volvo Turbocharged Diesel Stern Drive
- Displacement Only**
- Single Model 120 Volvo Stern Drive
 - Single Model 120 MerCruiser Stern Drive

PERFORMANCE DATA

Model: 2347 Offshore

Power Model 260 MerCruiser
 Gear Reduction. 1.5:1
 Fuel Load 74 gal.
 Water Load 15 gal.
 Passenger Weight 170 lb.
 Propeller 15-1/2 x 19 MerCruiser RH
 Engineering Test No. 358878
 Wind S-SW 20 to 25 mph
 Temperature. 78 degrees F.
 Altitude. 590 ft. above sea level

Power Model 225 Volvo Stern Drive
 Gear Reduction. 1.61:1
 Fuel Load 74 gal.
 Water Load 15 gal.
 Passenger Weight 170 lb.
 Propeller 16 x 17 LH
 Engineering Test No. 3581678
 Wind None
 Altitude. 590 ft. above sea level

RPM	Trim Angle	Radar Speed (MPH)	Fuel Consumption (GPH)
1000	.5	4.5	.75
1500	2.75	7.4	2.5
2000	5.75	12.3	4.75
2500	4.0	22.9	5.75
3000	2.75	30.0	8.25
3500	2.5	35.4	11.75
4000	2.25	40.1	17.0
4450	2.0	43.1	18.0

RPM	Trim Angle	Radar Speed (MPH)	Fuel Consumption (GPH)
1000	.5	5.4	.75
1500	1.75	7.9	1.75
2000	5.75	10.1	3.5
2500	5.5	16.4	4.75
3000	3.5	23.4	6.5
3500	2.75	30.4	8.75
4000	2.25	36.3	12.5

The results above were experienced by the specific unit tested. Different boats, engines or test conditions could result in varied performance.

CARVER