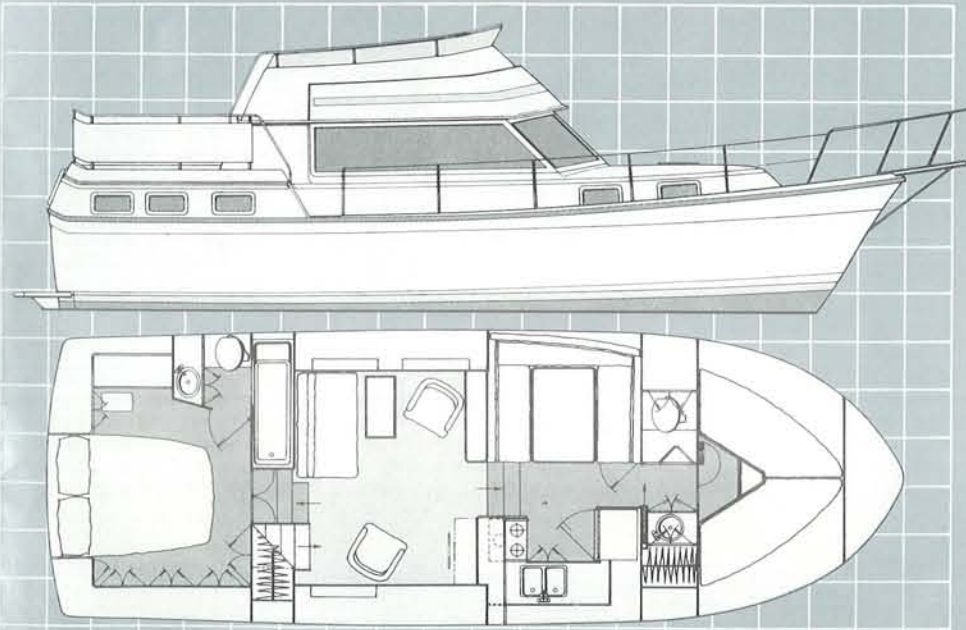
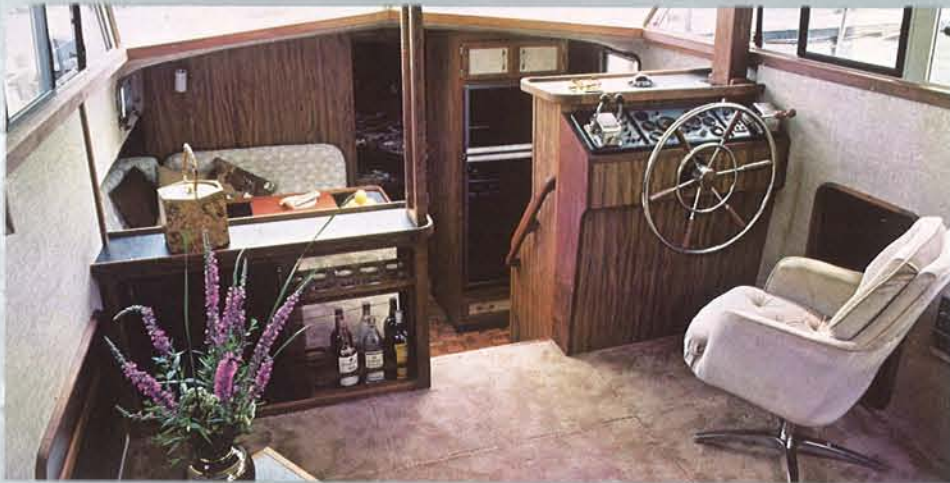
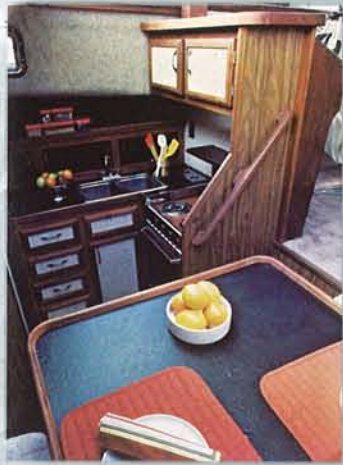


3607 AFT CABIN



1/4" = 2 Feet

Pride of the Carver fleet. Designed for long-range cruising comfort, the 36' Aft Cabin Cruiser features luxurious private accommodations not available in most other competitive yachts. A well-appointed Master Stateroom with an oversized double bed, private head with a bathtub/shower combination and a spacious vanity with sink and storage area, highlight this well-designed yacht. The forward stateroom conveniently includes a private full bath which may be closed off for use by guests sleeping in the salon or on the convertible dinette.

A unique feature is the spacious command bridge that seats 5 comfortably while allowing for free passenger movement without interfering with the helmsmen.

Additional features include a fully-equipped galley with all the amenities of home like a deep, double-basin sink, oven/range, large refrigerator/freezer plus more locker and storage space than normally found in larger yachts.

Carver's tradition of high quality workmanship and materials, along with a functional interior design for comfort underway and dockside entertaining, make the 36' Aft Cabin a lasting value and sound investment.

MODEL 3607 AFT CABIN

Additional Features:

- Safety rails include bow rail, taffrail and bridge safety rails.
- Salon furniture includes two barrel chairs with cocktail table.
- Anti-fouling bottom paint.
- Two struts support each propeller shaft.
- Wide walk-around gunwales.
- Tinted tempered safety glass encased in welded aluminum extrusion.
- Hand-laid solid fiberglass hull with fiberglass stringers and forward liner.
- Quality carpet, lined draperies, and upholstery chosen for durability and color coordination.

Available Options:

- Electric/hydraulic trim tabs.
- 6.5 KW generator
- 28,000 BTU air conditioning with reverse cycle heat
- Lower station helm and controls
- Bimini top
- Bridge cover
- Microwave oven
- 20 amp battery charging system
- Fiberglass swim platform
- Fiberglass bow pulpit

Profile:

Length	35'7"
Beam	12'6"
Height (Clearance above water)	11'9"
Displacement	16,500 lb.
Water System Capacity	112 gal.
Fuel System Capacity	240 gal.
Underwater Gear	
Propeller Shafts	1 3/8" dia. SS