



32

AFT CABIN

Cast your discriminating eye on the 32-foot Aft Cabin and embrace the aft cabin concept brought to magnificent perfection. Envelop yourself in the extraordinary privacy and personal luxuries that present themselves in unparalleled roominess.

Take a seat in the expansive salon and you'll feel as though it's a full living room. Here's room to move about and stand tall. Complete with a convertible sleeper-sofa and hi-lo table.

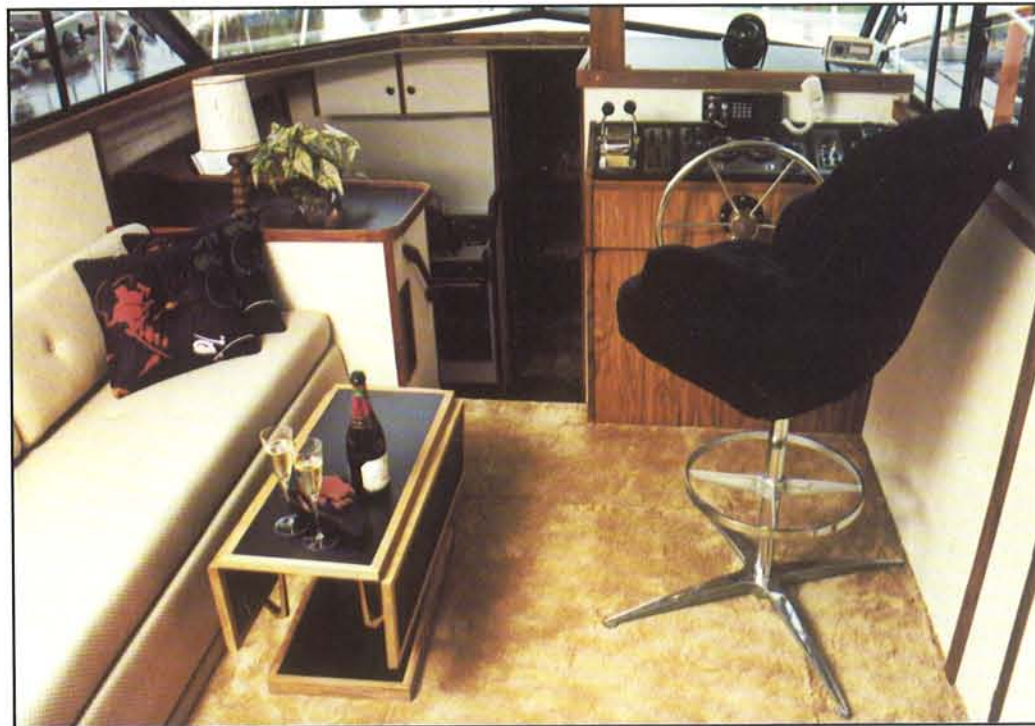
Whether you're heading for the open sea or cruising inland coves, the galley is equipped to make meals a breeze. Its electric stove and oven are always ready to create mouth watering temptations. Its upright refrigerator/freezer keeps your stores plentiful and cold. Add to that a deep basin stainless steel sink and full cabinet space with ample storage and you're ready to challenge the open sea for ports far from home.

And you'll cruise in unequalled comfort. The aft master stateroom sleeps two with more than generous storage space and the privacy of a large head compartment. Your comfort and that of your guests is made complete in the forward guest stateroom with sleeping for two and adjacent main head compartment that includes a stall shower complete with glass door.

The *piece de resistance* is a fully instrumented helm and a bridge that seats five in absolute comfort.

Perfection will never be the same again. You know you can't settle for less.

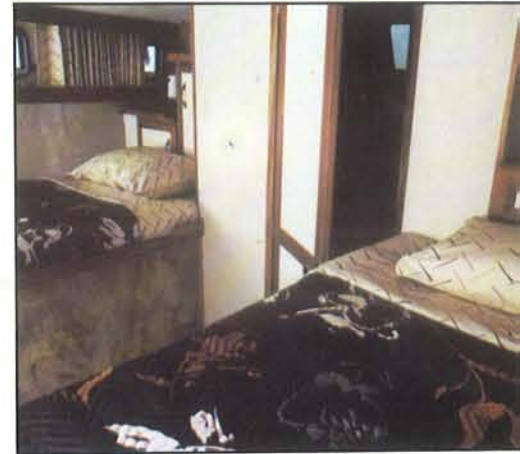
Salon



Bridge and Aft Deck



Galley



Aft Cabin



Profile

| | |
|------------------------------|---------------------------|
| Length | 32'0" |
| Beam | 11'7" |
| Draft | |
| Single | 41" |
| Twin | 34" |
| Height | 11'6" |
| Displacement | 12,000 lb |
| Water System | 84 gal |
| Fuel System | 172 gal |
| Underwater Gear | |
| Propeller Shaft Single | 1 3/8" Dia. SS |
| Propeller Shaft Twin | 1 1/4" Dia. SS |
| Rudders | Bronze w/1 1/4" SS Shafts |
| Struts | Heavy Duty Bronze Alloy |
| Cabin Headroom | 75" |
| Sleeping Capacity | 6 |



