


---

# 26

---

## SANTA CRUZ

---

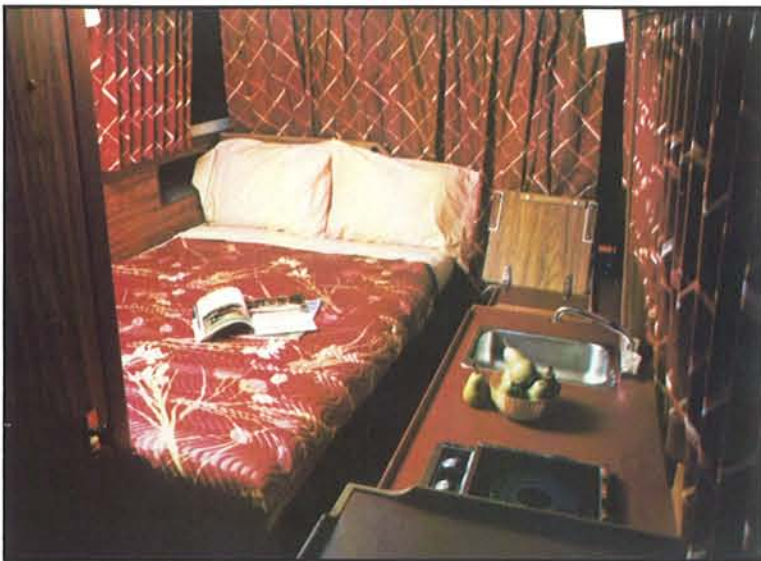
Stand at the helm on the 26 Santa Cruz's command bridge and the waterway becomes yours in this expression of your family's good taste. It envelops you in color balanced upholstery as rich as that found in the finest homes. In sensual carpeting. And in gracious pewter instrument panels, as the wind strikes the sleek wrap-around venturi windshield to careen over and around you.

Now go below to where the world outside is brought inside through panoramic windows that sweep around the spacious cabin. Lean back and survey the expansive lounge/dinette area. Stretch out on the forward double berth, or on the roomy berth created from the convertible dinette. Take command of the perfectly appointed galley.

Astounding storage space. Private head compartment with large vanity. Dual helm stations. Standard dockside wiring. Luxurious appointments at every turn.

We call it the Santa Cruz. You'll call it distinction.

Evening Interior



Cabin Interior



**Profile**

<b>Length</b> .....	25'8"
<b>Beam</b> .....	8'0"
<b>Draft</b>	
Single I/O .....	34"
Single Inboard .....	40"
<b>Height</b> (clearance above water) .....	8'9"
<b>Displacement</b> .....	5,400 lb
<b>Fuel System</b>	
Single I/O .....	100 gal
Single Inboard .....	114 gal
<b>Water System</b>	
Standard .....	40 gal
Optional hot water system .....	46 gal
<b>Sleeping Capacity</b>	
Standard Capacity .....	4
Optional Capacity .....	5
<b>Cabin Headroom</b> .....	75"



