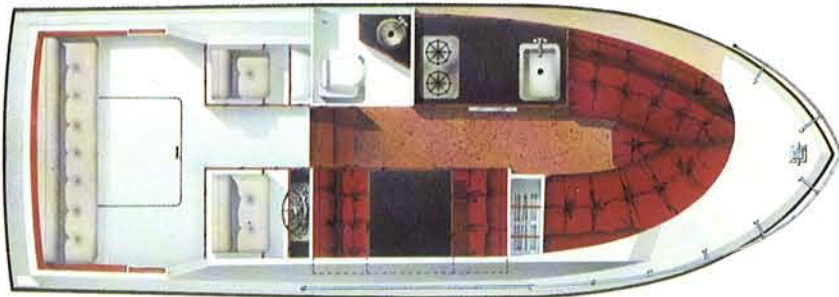


23 Monterey



26 Monterey

23 & 26

MONTEREY

Break away from the ordinary, and speed into the wind and open sea on a Monterey. It's the high performance group with the right blend of responsive speed and agility to satisfy the maverick in you...without sacrificing high style.

Step aboard. And go for it.

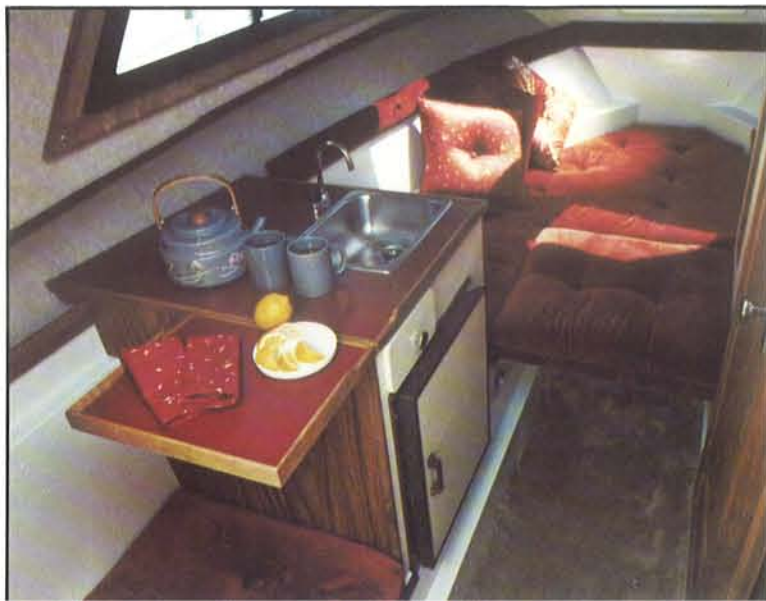
23 Monterey

Turn loose the 23-foot Monterey and experience the same sporty styling and high-speed stability. Here is the distinctive flair of the 23's style line that encompasses generous accommodations for four. With cabin or cockpit-mounted dinette table, an ice box, sink, comfortable private head, and storage space throughout. It's pure class and performance. It's pure Carver, challenging the maverick in you.

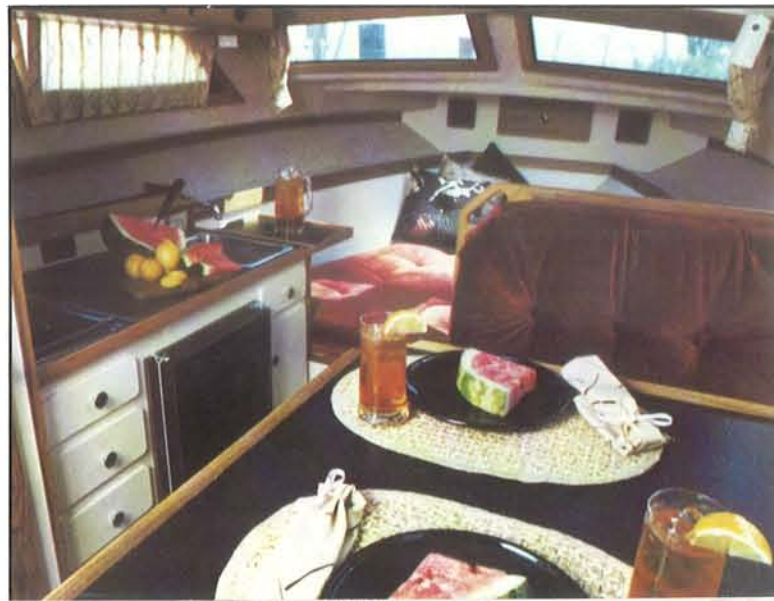
26 Monterey

As the 26-foot Monterey's sporty hull slices water, you take control in a cockpit unmatched for seating room and comfort. Throttle down at sunset and treat yourself to luxury in the forward double berth. If more room is what you seek, the dinette area converts to another double berth. And for those meals that accent your lifestyle, you need only take advantage of the galley, complete with ice box, stove and sink. With an enclosed stand-up head for comfortable privacy, and a convertible top set with aft camper enclosure, this is boating at its sportiest with luxuries unmatched.

23 Interior



26 Interior





23 Profile

- Length 23'0"
- Beam 8'0"
- Draft 34"
- Height (clearance above water) 6'10"
- Displacement 4,000 lb
- Fuel System 74 gal
- Water System 15 gal
- Sleeping Capacity**
- Standard Capacity 4
- Optional Capacity 5
- Cabin Headroom** 72"

26 Profile

- Length 25'8"
- Beam 8'0"
- Draft
- Single I/O 34"
- Single Inboard 40"
- Height (clearance above water) 8'9"
- Displacement 5,300 lb
- Fuel System**
- Single I/O 100 gal
- Single Inboard 114 gal
- Water System**
- Standard 40 gal
- Optional hot water system 46 gal
- Sleeping Capacity**
- Standard Capacity 4
- Optional Capacity 5
- Cabin Headroom** 75"

SEATING

Swivel Pilot Seat	■	■	■	□	□	□	□	□	□
Helm Chair at Lower Station	□	□	□	■	□	□	□	□	□
Aft Deck Lounge	□	□	□	■	□	□	□	□	□
Dinette	■	■	■	■	■	■	■	■	■
Sofa (Plan A on 3b)	■	■	■	□	□	□	□	□	□
Decorator Barrel Chair	□	□	□	□	□	□	□	□	□

WEATHER COVERS

Convertible Top Set	□	□	□	■	■	■	□	□	□
Hardtop - Fiberglass	□	□	□	□	□	□	□	□	□
Hardtop Side and Aft Curtain	□	□	□	□	□	□	□	□	□
Bimini Top	□	□	□	□	□	□	□	□	□
Bimini Top w/Full Enclosure	□	□	□	□	□	□	□	□	□
Aft Deck Weather Cloth	□	□	□	□	□	□	□	□	□
Bridge Cover	□	□	□	□	□	□	□	□	□

HEAD COMPARTMENT(S)

Self Contained Head	□	□	□	■	■	■	□	□	□
Flow Thru Head w/Holding Tank	■	■	■	■	■	■	□	□	□
Electric Flow Thru Head w/Holding Tank	□	□	□	□	□	□	□	□	□
Vac-U-Flush Head	□	□	□	□	□	□	□	□	□
Fore and Aft Head Compartments	■	■	■	□	□	□	□	□	□
Aux. Waste Holding Tank	□	□	□	□	□	□	□	□	□

GALLEY & INTERIOR EQUIPMENT

Electric 3 Burner Stove with Oven	■	■	■	□	□	□	□	□	□
Alcohol Stove (Recessed)	□	□	□	■	■	□	□	□	□
Alcohol/Electric Stove (Recessed)	□	□	□	■	■	□	□	□	□
Propane Stove (Recessed)	□	□	□	□	□	□	□	□	□
Propane 3 Burner Stove with Oven	□	□	□	□	□	□	□	□	□
Manual Water System	□	□	□	□	□	□	□	□	□
Pressure Cold Water System	□	□	□	□	□	□	□	□	□
Pressure Hot and Cold Water System	■	■	■	■	■	□	□	□	□
Shower - Pressure Cold Water	□	□	□	□	□	□	□	□	□
Shower - Pressure Hot and Cold Water	■	■	■	■	■	□	□	□	□
Refrigerator - Dual Voltage	□	□	□	■	■	□	□	□	□
Refrigerator - Double Door, Dual Voltage	■	■	■	□	□	□	□	□	□
Ice Maker	□	□	□	□	□	□	□	□	□
Air Conditioning	□	□	□	□	□	□	□	□	□
AM/FM Stereo w/Cassette Player	□	□	□	□	□	□	□	□	□
Decorator Upholstery, Carpet & Fabrics	■	■	■	■	■	■	■	■	■
Draperies	■	■	■	■	■	■	■	■	■

36 AFT CABIN
33 MARINER
32 AFT CABIN
28 MARINER
28 AFT CABIN
26 SANTA CRUZ
26 MONTEREY
23 MONTEREY

Standard & Optional Equipment

- Standard
- Optional

HELM

Command Bridge	■	■	■	■	□	□	□	□	□
Dual Station Controls	□	□	□	□	■	□	□	□	□
Compass	□	□	□	□	□	□	□	□	□
7" Spotlight - Electric Remote	□	□	□	□	□	□	□	□	□
5" Spotlight - Electric Remote	□	□	□	□	□	□	□	□	□
Trim Tabs - Electric/Hydraulic	■	■	■	□	□	□	□	□	□
Twin Engine Synchronizer	□	□	□	□	□	□	□	□	□
Engine Hour Meter	□	□	□	□	□	□	□	□	□
Horn - Single Trumpet	■	■	■	■	■	■	■	■	■
Horn - Dual Trumpet	■	□	□	□	□	□	□	□	□
Complete Engine Instrumentation	■	■	■	■	■	■	■	■	■
Anchor and Navigation Lights	■	■	■	■	■	■	■	■	■

ELECTRICAL

Cabin Lighting	■	■	■	■	■	■	■	■	■
Dockside Wiring 110V-30A	■	■	■	■	■	■	■	■	□
Generator	□	□	□	□	□	□	□	□	□
Battery Charger - 20AMP	□	□	□	□	□	□	□	□	□
Battery - One (405 cold cranking amps)	□	□	□	□	□	□	□	■	■
Battery - Two (405 cold cranking amps)	■	■	■	■	■	□	□	□	□

EXTERIOR EQUIPMENT

Swim Platform w/Ladder	□	□	□	□	□	□	□	□	□
Transom Door	□	□	□	□	□	□	□	□	□
Bow Pulpit	□	□	□	□	□	□	□	□	□
Safety Rails	■	■	■	■	■	■	■	■	■
Anti Skid Decks	■	■	■	■	■	■	■	■	■
Walk Around Side Decks	■	■	■	■	■	■	■	■	■
Window Screens	■	■	■	■	■	■	■	■	■
Electric Windlass	□	□	□	□	□	□	□	□	□
Anti Fouling Bottom Paint	■	■	■	■	■	■	■	■	■
Spring Line Cleats	■	■	■	■	■	■	■	■	■
Engine Fresh Water Cooling	□	□	□	□	□	□	□	□	□

36 AFT CABIN
33 MARINER
32 AFT CABIN
28 MARINER
28 AFT CABIN
26 SANTA CRUZ
26 MONTEREY
23 MONTEREY



23 Monterey



26 Santa Cruz



28 Mariner



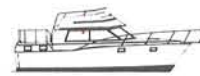
33 Mariner



26 Monterey



28 Riviera Aft Cabin



32 Aft Cabin



36 Aft Cabin