

# CARVER



## 36 AFT CABIN



# 36 AFT CABIN

Plan A



Plan A



Plan B



The Carver 36 Aft Cabin is one of the finest power pleasure crafts in its class. The versatile design, quality craftsmanship, and proven performance reflect Carver's commitment to building the best. "Come aboard" and inspect our craft. You'll appreciate what sets the 36 Aft Cabin apart from the rest.

## PROFILE

The 36 Aft Cabin offers a unique cruising design with luxury stateroom accommodations. The master stateroom features a queen-size berth, private head with tub/shower and live-aboard storage. Amidship, two floor plan selections allow salon, galley and dinette arrangements to fit your personal needs. The guest stateroom forward includes a private head with shower. Topsides, the aft deck provides a large entertainment area. The spacious command bridge comfortably seats six adults and includes a convertible sun lounge.

Length .....	35'7"
Beam .....	12'6"
Draft .....	38"
Bridge Clearance .....	11'9"
Displacement .....	18,500 lb
Cabin Headroom .....	75"
Sleeping Capacity	
Plan A .....	8
Plan B .....	6
Fuel System Capacity .....	240 gal
Water System	
Total Capacity (hot & cold) .....	112 gal
Underwater Gear	
Propeller shafts .....	1 3/8" dia SS
Rudders .....	Bronze w/1 1/4" SS shafts
Struts (2/shaft) .....	Heavy duty bronze alloy

## DESIGN

The Carver hull is designed for a smooth stable ride, superior planing performance and fuel efficiency. The fine V-shaped bow entry and round bilge reduce overall drag on the hull. Wide chines, running from midship to the transom, provide the lift necessary for planing performance. The aft running bottom, gradually decreasing in V to 8°, creates additional lift, stability and fuel efficiency. The 14" deep keel provides superior tracking performance while eliminating low speed wandering.

Centerline length.....	35'7"
Waterline length.....	31'4"
Gunwale Beam .....	12'6"
Waterline Beam (at transom).....	11'0"

## CONSTRUCTION

Hull construction of the 36 Aft Cabin begins with a fully cured gel coat of 15 mil. thickness. Carver craftsmen then use the hand layup method of hull construction. Each layer of fiberglass is carefully applied to assure proper resin saturation and consistent thickness. This procedure guarantees the proper fiberglass to resin ratio assuring consistent laminate strength throughout. The hull consists of several carefully applied layers of 1 1/2 oz. random strand mat and 24 oz. woven roving fiberglass. Generous overlap of these layers in the keel and chines increases hull strength, impact resistance and overall structural integrity.

The fiberglass hull is strongly reinforced with an extensive network of longitudinal and lateral stringers. They are bonded to the hull by 24 oz. woven roving fiberglass. A strong fiberglass liner gives additional structural support to the bow section, bonding the forward stringers and engine room bulkhead in place.

Superstructure and deck surfaces are fiberglass reinforced with 3/4" end grain balsa and plywood encapsulated within the fiberglass laminate to ensure the exclusion of moisture. The deck is firmly secured to the hull by fiberglass adhesive and stainless steel screws and sealed by a heavy stainless steel/vinyl gunwale molding.

Every Carver boat is carefully inspected many times during the construction process. We thoroughly inspect every step to guarantee each boat meets our high standards of construction.

## PROPULSION

The Carver 36 Aft Cabin features a choice of engines; the twin model 350 Crusader inboards or the twin model 340 Mercruiser inboards. The propulsion system incorporates 2.5:1 reduction gears, 1 3/8" stainless steel shafts with large 22" x 22" four blade propellers.

Cruising speed at 3000 rpm is 18.4 mph. Top speed is 30 mph.\* Specifications for diesel propulsion are available from your Carver dealer.

## STANDARD FEATURES OF THE CARVER 36 AFT CABIN.

A brief tour demonstrates the many standard features of the Carver 36 Aft Cabin. Let's start on the bridge. The slide/swivel pilot seat provides an unobstructed view and easy access to the control console. Console instrumentation includes back-lighted fuel, oil and temperature gauges, tachometers and voltmeter. The forward bridge bench seat converts into a sun lounge. The total bridge storage is 55.5 cu. ft.

The skid resistant decks are completely surrounded by welded stainless steel bow rail and safety rails. All deck hardware, including 4 - 10" cleats, 4 - springline cleats and rope deck pipe, is stainless steel. Windows, deck hatches and cabin ports are fully weather sealed and include screens.

Below, the forward stateroom has 74" of headroom. It features a large 76" long V-berth with seat and 6.14 cu. ft. of underberth storage. The forward head compartment contains a hot/cold shower, marine head with 30 gallon holding tank and full mirrored vanity complete with stainless steel sink. Vanity storage is 4 cu. ft. with an additional 12 cu. ft. of hanging locker storage.

The spacious aft stateroom has a large double berth, seated vanity with mirror and 53.8 cu. ft. of cabinet and hanging storage. The aft head compartment contains a shower/bathtub combination with curtain, marine head with 40 gallon holding tank, and full mirrored vanity complete with stainless steel sink. An electric blower provides ventilation.

The pressurized 112 gallon hot/cold water system serves showers, sinks and the galley. The galley's spacious counter top is equipped with sea rails and contains a deep dual basin stainless steel sink. The Princess 3-burner stove/oven is standard. The Norcold double door refrigerator/freezer features 3 removable shelves, in-door storage, crisper and a 40 lb. freezer. This unit operates on 12 volt or 110 volt power.



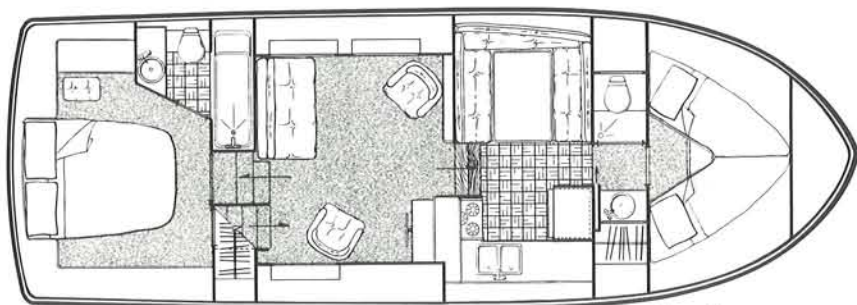
The Carver 36 Aft Cabin has two salon floor plans to choose from. Plan A features sleeping accommodations for eight with a dinette that converts to a large double berth. The spacious salon has a double sleeper sofa, dry bar and barrel chair.

Floor Plan B sleeps six and features a raised lounge offering full seated cruising visibility for five. The dinette/lounge converts to a large double berth.

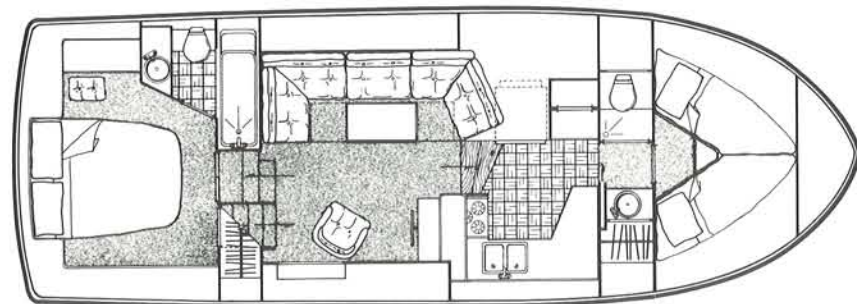
The interior decor includes a choice of colors. The fully lined drapes are 100% cotton with Scotchgard protection. The plush 100% nylon carpet is stain and soil resistant.

The Carver 36 Aft Cabin's navigation and anchor lights exceed U.S. Coast Guard standards. Cabin lighting is 12 volt with courtesy lights on the bridge and aft deck. 110 volt receptacles are located throughout. Dockside wiring is 110 volt, 30 amps with a 50 foot shore cable.

Now that you have taken the time and care to learn about our product...we feel that you will want to experience it as well. We recommend that you visit your Carver dealer or tour our production facilities in Pulaski, WI, for a thorough inspection of the Carver 36 Aft Cabin.



Plan A



Plan B

## STANDARD EQUIPMENT

### Exterior

- Heavy duty gunnel molding
- Bottom paint, anti-fouling
- Bow, aft deck, bridge rails - welded SS
- Foredeck hatches (3)
- Navigation lights
- Command bridge w/helm, seating, windshield
- Helm console w/full instrumentation
- Anti-skid texture fiberglass decks
- Slide/swivel pilot seat

### Galley & Head Compartment

- Pressure water system
- Hot water heater, 10 gallon
- Stove w/oven, electric 3-burner
- Refrigerator, dual voltage
- Vanity, fore & aft
- Heads, manual flush (fore & aft)
- Shower, fiberglass stall w/bifold door (fore)
- Tub/shower combination w/curtain (aft)

### Functional/Safety

- Windows, lightly tinted, w/screens
- Bilge pump, automatic (3)
- Gravity bilge ventilation
- Horn, dual trumpet electric
- Trim tabs, electric/hydraulic

### Electrical

- Heavy duty batteries (2)
- Dockside wiring, 30 amp, 110 VAC
- 12 volt wiring w/thermal breakers
- Cabin lighting, 12 volt

### Interior

- Color coordinated carpeting, draperies, and upholstery
- Teak parquet floor in galley
- Two private staterooms

## SELECTED OPTIONS

### Helm Equipment

- Lower station helm & controls
- Engine synchronizer
- 7" spotlight - electric remote control
- Cigar lighter
- Compass
- Engine hour meters

### Seating

- Pilot seat at lower station

### Galley & Interior

- Choice of floor plans
- 3-burner propane stove w/oven
- Microwave oven
- Ice maker
- Shore water connection
- AM-FM receiver w/stereo cassette
- Air conditioning w/reverse cycle heat
- Monitors - water & holding tank
- Washer-dryer (Plan B only)

### Weather Covers

- Aft deck weather cloth
- Bimini top w/full enclosure

### Heads

- Vac-u flush heads w/holding tank
- Crown electric heads

### Electrical

- 7.5 KW generator
- Dual dockside, 110V-30A
- 20 amp battery charging system

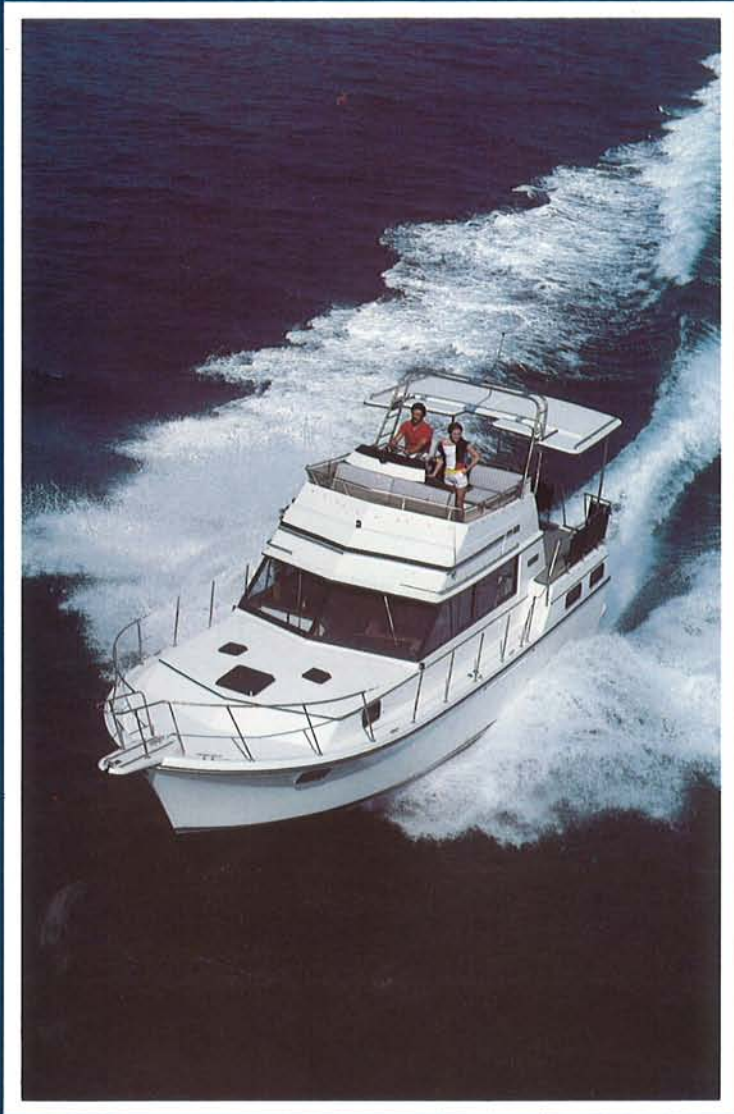
### Exterior

- Aft deck hardtop w/enclosure
- Fiberglass swim platform w/ladder
- Fiberglass bow pulpit
- Electronics arch
- Fender racks
- Bridge and aft deck carpet

### Propulsion

- Engine fresh water cooling





# CARVER

CARVER CORPORATION  
Industrial Drive  
Pulaski, WI 54162

For additional information on any Carver cruiser, or to arrange your personal tour of our facilities in Pulaski, call us at 1-800-558-8190 (in Wisconsin 1-800-242-4546; in Canada, 1-800-351-0644) between 8 and 5, CST. Or write Carver, Pulaski, Wisconsin 54162.

\*These results were experienced by the specific unit tested. Different boats, engines, load or test conditions could result in varied performance.

Carver reserves the right to change without notice: price, color, materials, equipment specifications or models of its cruiser line. Models may also be discontinued without obligation to previous purchasers.