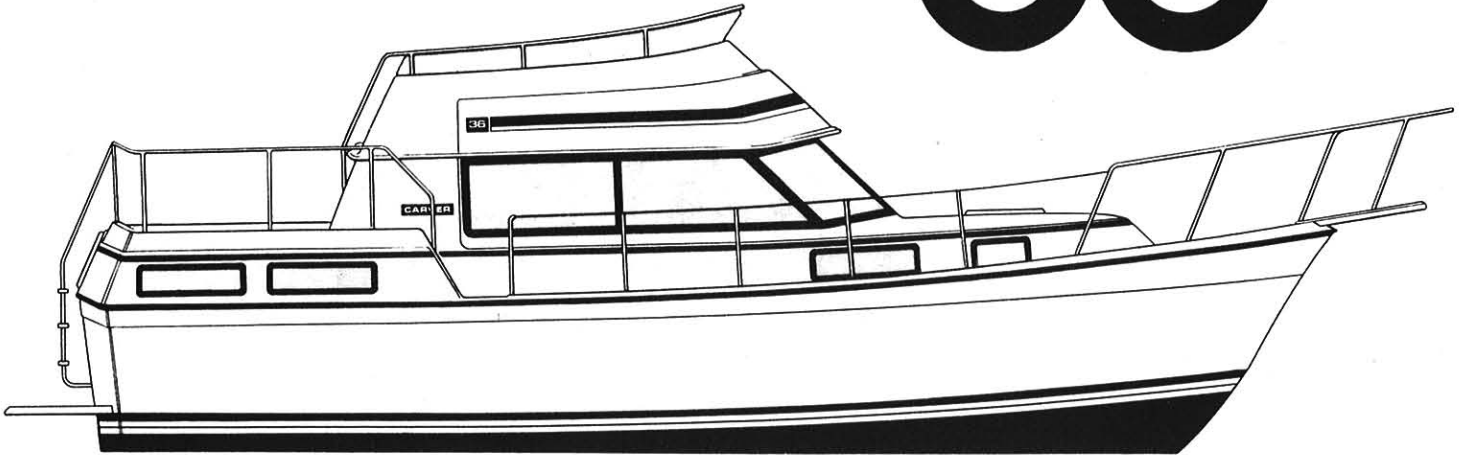


36 Aft Cabin



The Carver 36 Aft Cabin offers unique cruising comfort with luxury stateroom accommodations. The master stateroom aft features queen-size berth, private head with tub/shower and live-aboard storage. Amidship the spacious salon includes a sleeper-sofa, table and salon chair. A dry bar and

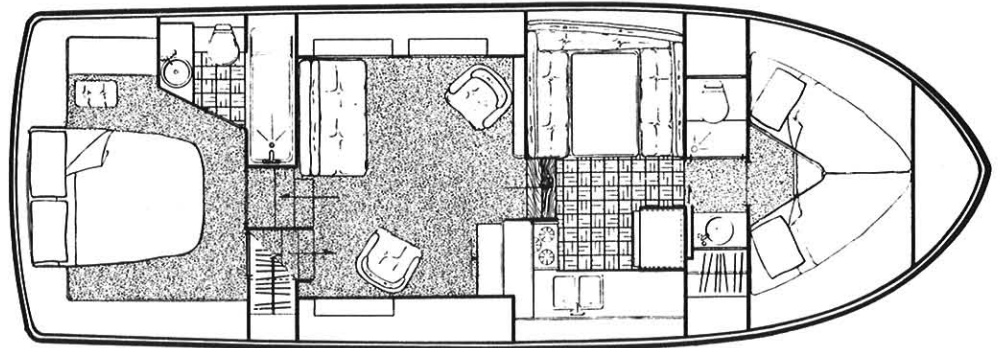
fully equipped galley with dinette add to the standard amenities. The guest stateroom forward includes a private head with shower. Topside, the aft deck provides a large entertainment area. The spacious command bridge comfortably seats six adults and includes a convertible sun lounge.

SPECIFICATIONS

LOH	35'7"
Standard LOA	35'7"
Maximum LOA	40'4"
Beam	12'6"
Draft	38"
Bridge Clearance	11'9"
With Arch	16'1"
Deadrise at Transom	8°
Dry Weight (approx.)	18,500 lb.
Cabin Headroom	6'3"
Sleeping Capacity	8
Fuel System Capacity	252 gal.
Water System	109 gal.
Waste Capacity	30 gal.

UNDERWATER GEAR

Propeller Shafts	1 3/8" dia SS with tapered coupling
Rudders	Bronze with 1 1/4" SS shafts
Struts (2/shaft)	Heavy-duty bronze alloy



Carver 36 Aft Cabin

STANDARD EQUIPMENT

Exterior

Heavy-duty gunwale molding
Bottom paint, anti-fouling
Welded SS bow, aft deck, bridge rails
SS deck hardware, including four 10" cleats,
four springline cleats and rope deck pipe
Fully weather-sealed windows, deck hatches
and cabin ports include screens
Three foredeck hatches
Navigation lights (NMMA approved)
Command bridge with helm, seating,
windshield
Teleflex console instrumentation includes
back-lighted fuel, oil and temperature
gauges, tachometers and voltmeter
Total bridge storage of 55.5 cu. ft.
Hydraulic steering
Anti-skid fiberglass decks
Slide/swivel pilot seat
Aft deck plexiglass weather shield
Windshield covers

Propulsion

Twin 454 CID Crusader inboards - gas,
454 cu. in. GM block, 4-barrel carburetion
Propellers, 22" x 22" Dyna Quad
Twin 7.4L MerCruiser inboards - gas,
454 cu. in. GM block, 4-barrel carburetion
Propellers, 22" x 22" Dyna Quad

Design

The Carver hull is designed for a smooth, stable ride, superior planing performance and fuel efficiency. The fine V-shaped bow entry and round bilge reduce overall drag on the hull. Wide chines, running midship to transom, provide the lift necessary for superior planing performance. The aft running bottom creates additional lift, stability and fuel efficiency. The 14" deep keel provides superior tracking performance while eliminating low-speed wandering.

Centerline length _____ 35'7"
Waterline length _____ 31'4"
Waterline beam at transom _____ 11'0"
Freeboard aft _____ 43 3/4"
Freeboard forward _____ 64"

Construction

Hull construction begins with a fully cured gel coat of 18 mil. thickness. Hand layup method of construction guarantees the proper fiberglass to resin ratio, assuring consistent laminate strength throughout. The hull is made up of several carefully applied layers of 1 1/2 oz. random strand mat and 24 oz. woven roving fiberglass. Generous overlap of these layers in the keel and chines increases hull strength, impact resistance and overall structural integrity.

The fiberglass hull is strongly reinforced with an extensive network of longitudinal and lateral stringers bonded to the hull by 24 oz. woven roving fiberglass. A strong fiberglass liner gives additional structural support to the bow section, bonding the forward stringers and engine room bulkhead in place.

Superstructure and deck surfaces are fiberglass-reinforced with 3/4" end grain balsa and plywood encapsulated within the fiberglass laminate to ensure the exclusion of moisture. The deck is firmly secured to the hull by fiberglass adhesive and SS screws, and sealed by a heavy gunwale molding.

Every Carver boat is thoroughly inspected at each step of the construction process to guarantee it meets our demanding, high-quality standards.

Galley and Head Compartments

Pressurized 109 gal. hot/cold water system
11 gal. water heater
Princess electric 3-burner stove with oven/broiler
Norcold double door refrigerator/freezer, dual-voltage
Spacious galley counter top with sea rails and deep dual basin SS sink
Fully mirrored vanity with SS sink, fore & aft
Forward vanity storage is 4 cu. ft.
Forward head with 30 gal. holding tank, manual flush
Aft head manual flush
Fiberglass stall shower with bifold door (fore)
Tub/shower combination with curtain (aft)
Electric blower for ventilation
Engine heat exchanger

Functional/Safety

Windows, lightly tinted, with screens
Three automatic, electric bilge pumps
Gravity bilge ventilation
Dual-trumpet electric horn
Bennett electric/hydraulic trim tabs
Fireboy Halon fire extinguisher system
Carbon monoxide monitoring system
Galvanic isolator
Shipping cradle

Electrical

Two heavy-duty batteries
Dockside wiring, 30 amp, 120 VAC with a 50 ft. shore cable
12V wiring with thermal breakers
Cabin lighting, 12V
Navigation and anchor lights exceed U.S. Coast Guard standards
Courtesy lights on bridge and aft deck
120V receptacles located throughout

Interior

Hand-oiled, custom-milled teak woodwork
Teak parquet floor in galley and head
Forward stateroom
74" headroom
76" V-berth with seat
6.14 cu. ft. underberth storage
12 cu. ft. hanging locker storage
Dinette converts to a large double berth
Color-coordinated carpeting, draperies and upholstery
Plush, stain- and soil-resistant 100% nylon carpeting
Fully lined 100% cotton drapes protected by Scotchguard
Salon chair

OPTIONAL EQUIPMENT

Helm Equipment

Lower station helm and controls
Engine synchronizer
5" or 7" spotlight - electric remote control
Cigar lighter
Compass
Engine hour meters

Seating

Salon chair, additional

Galley and Interior

3-burner electric stove with microwave
3-burner propane with oven
Icemaker
Shore water connection
Maxxima AM/FM receiver with stereo/cassette
Air conditioning with reverse cycle heat
Water tank monitor gauge
Decorator pillows
Mini blinds
Nutone blender
Linen package

Weather Covers

Bimini top
Bimini top with full enclosure
Bridge, helm and seat covers

Heads

Raritan crown electric heads
Raritan electric flush heads
Overboard discharge

Electrical

6.5 KW Kohler generator
9.0 KW Kohler diesel generator
Dual-dockside, 120V-30A
Dockside adaptors
20 amp battery charging system

Exterior

Aft deck hardtop with enclosure
Fiberglass swim platform with ladder
Fiberglass bow pulpit
4 lb. fire extinguisher
Windlass
Electronics arch
Fender racks
Bridge and aft deck carpet
Seawater washdown

Propulsion

Engine fresh water cooling
Fuel tank selector valves
Strainers

For more information on the exciting 36 Aft Cabin, see your Carver dealer. We also invite you to visit our production facilities in Pulaski, WI. Call toll free 800/558-8190. (Wisconsin 800/242-4546; Canada 800/351-0644)

Information accurate at time of printing. Carver Boat Corporation reserves the right to change without notice: price, color, materials, equipment specifications or models. Models may also be discontinued without obligation to previous purchasers. All Carver yachts and cruisers carry a limited warranty. See your dealer for current specifications.

CARVER

Carver Boat Corporation
Industrial Drive
Pulaski, Wisconsin 54162-1010
414/822-3214

