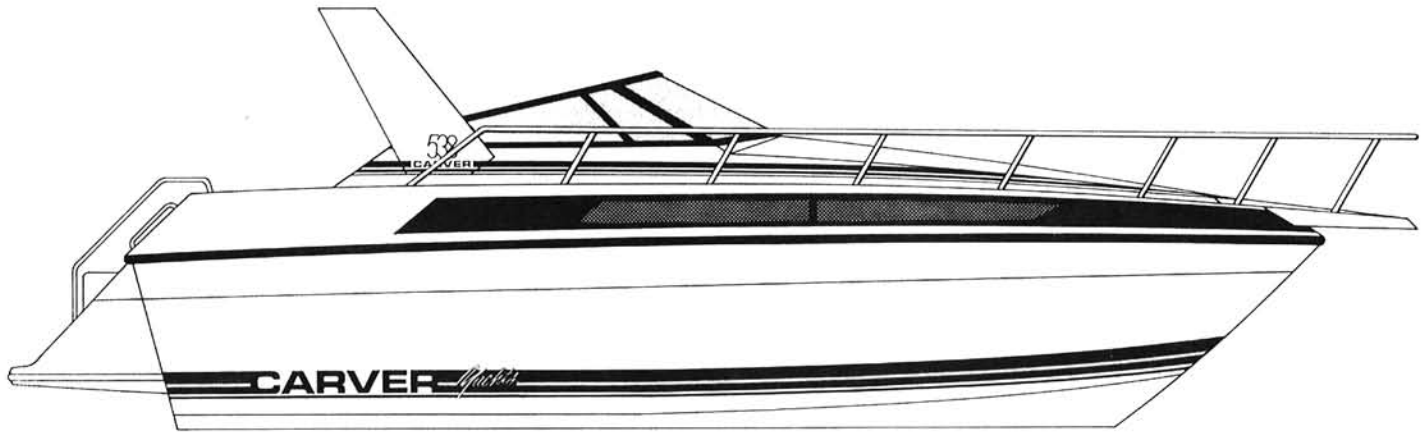


538 **Montego**



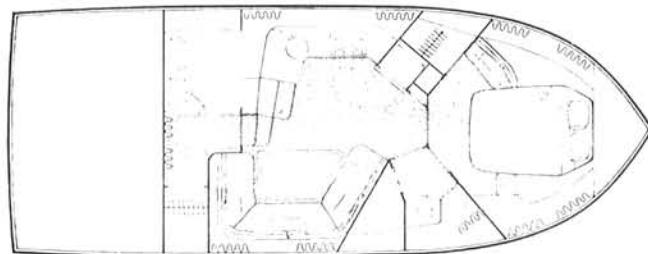
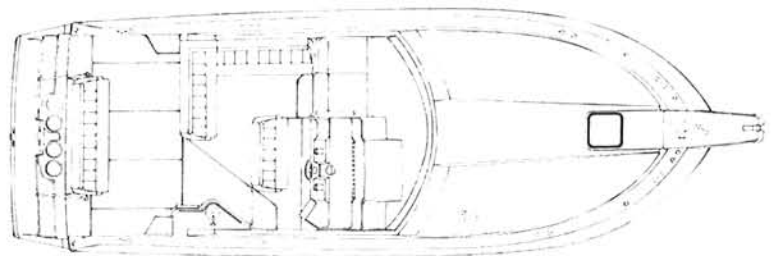
The queen of the Montego fleet brings you more nice touches! Carver's 538 combines a sporty express style exterior with an interior well suited for extended cruising. The master stateroom features an island berth and direct access to the head

compartment. The mid-cabin offers a large double berth and standing headroom.

The exterior, with integral swim platform, roomy cockpit and wet bar, is the perfect setting for swimming, sunning and entertaining.

SPECIFICATIONS

LOA w/platform	38'5"	11,71 m
LOA w/platform & pulpit	41'3"	12,57 m
Beam	13'2"	4,02 m
Draft	40"	1,00 m
Bridge Clearance	9'3"	2,81 m
With Opt. Arch & Light	15'11"	4,85 m
Deadrise @ Transom	19°	
Dry Weight (approx.)	16,000 lbs	7256,24 kg
Cabin Headroom	6'4"	1,93 m
Sleeping Capacity	5	
Fuel System	250 gal	946,25 L
Water System	91 gal	344,44 L
Waste System	35 gal	132,48 L



Carver 538 Montego

STANDARD EQUIPMENT

Helm Equipment

Engine synchronizer
Electric/hydraulic trim tabs
Cigar lighter
Compass
Engine hour meter(s)

Exterior

Welded SS bow and safety rails
Bottom paint, anti-fouling
SS deck hardware including 2-12" bow cleats, 4-10" springline cleats, 2-12" stern cleats and 1-12" anchor cleat
Weather-sealed deck hatch with screen and hatch adjuster
Navigation lights (USCG/NMMA approved)
Command bridge with helm, seating, skiff windshield and storage
Teleflex console instrumentation includes back-lighted fuel gauge, oil and temperature gauges, tachometers and voltmeter
Anti-skid fiberglass decks
Bow pulpit
Self-bailing cockpit
Fiberglass swim platform with ladder

Galley and Head

Pressurized hot/cold water system
40 gallon fresh water tank (2)
11 gallon water heater
Sea rails and single SS sink in galley
2-burner alcohol/electric stove and microwave
Double door, dual-voltage refrigerator/freezer
Mirrored vanity with SS sink, head compartment
Self-contained, dockside discharge marine head
35 gallon holding tank
Shower, fiberglass shower stall w/clear plexiglass door
Electric blower for ventilation

Functional/Safety

Windows, tinted with screens
Halon fire extinguisher system
Automatic, bilge pump (2)
Gravity bilge ventilation
Dual - trumpet electric horn
Carbon monoxide monitoring system
Galvanic isolator
Shipping/storage cradle
Bonding system

Electrical

12 Vdc battery (2)
Cabin lighting, 12 Vdc
Dockside wiring, 30A, 110 Vac with 50 ft. shore cable
12 Vdc wiring with thermal breaker
Exterior courtesy lights
110 Vac receptacles located throughout

Interior

U-shaped dinette
Forward stateroom with double berth
Color-coordinated carpeting, draperies and upholstery
Plush, stain and soil-resistant 100% nylon carpeting
Fully lined 100% cotton drapes protected by Scotchgard

OPTIONAL EQUIPMENT

Helm Equipment

7" electric remote spotlight
Electric windshield wiper (companion)

Galley, Interior & Head

Grey water holding tank
2-burner recessed propane stove
Shore water connection
Blender
Stereo cassette w/AM-FM radio
Leads for stereo
Air conditioning with reverse cycle heat
Water tank monitor
Decorator pillow (6)
Crown electric head with macerator
Electric flush head
Overboard discharge system

Weather Covers

Camper top with boot
Convertible top with full enclosure
Convertible top with boot
Seat covers

Electrical

6.5 kW gasoline generator
Dual dockside 30A, 110 Vac
20A battery charging system
Dockside adaptor(s)

Exterior

Icemaker
Hand shower on swim platform
Cockpit pressure seawater washdown
Wire for windlass
Windlass
Electronic arch
External sea water strainers
Internal sea water strainers
Cockpit and bridge exterior carpet

Propulsion

Twin Inboard - Gas
7.4L MerCruiser
454 CID Crusader
FWC MerCruiser, Crusader
Fuel tank selector valves
Spare props and shaft

Safety and Miscellaneous

4 lb. fire extinguisher
Loading charge
Shrink wrap

For more information on the 538 Montego, see your Carver dealer. We also invite you to visit our production facilities in Pulaski, WI. Call toll free 800/558-8190. (Wisconsin 800/242-4546; Canada 800/351-0644).

Information accurate at time of printing. Carver Boat Corporation reserves the right to change without notice: price, color, materials, equipment specifications or models. Models may also be discontinued without obligation to previous purchasers. All Carver Yachts and Cruisers carry a limited warranty. See your dealer for current specifications.

CARVER

Carver Boat Corporation
Industrial Drive
Pulaski, Wisconsin 54162
414/822-3214

CERTIFIED


Copyright 1990 Carver Boat Corporation.