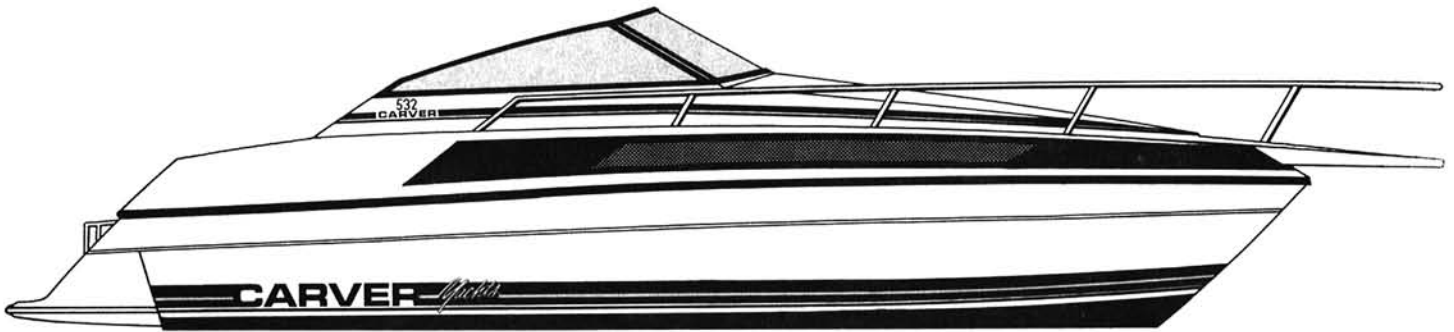


532 **Montego**

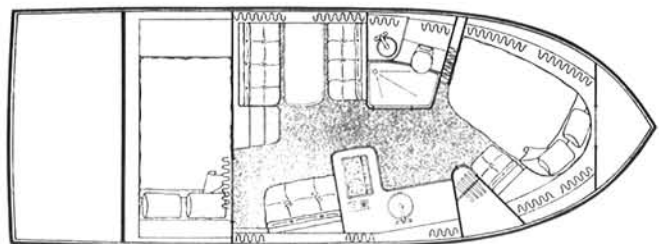
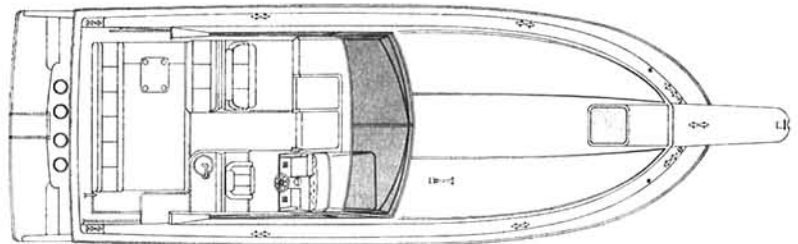


The striking good looks of the 532 Montego are the result of sleek hull and deck lines and sophisticated exterior graphics. Topside the 532 has a large cockpit with lounge, wetbar with storage and an integral swim platform, both functional and fun! The interior of the 532 offers the comfort and privacy that only a Carver can really provide....

Double cabin accommodations together with the convertible dinette provide sleeping room for six. There's a fully equipped galley and complete head compartment with shower. So come aboard the 532 Montego and see the comfort of tradition blended with a look of today!

SPECIFICATIONS

LOA w/platform	34'0"	10,36 m
LOA w/platform & pulpit	37'2"	11,33 m
Beam	11'0"	3,35 m
Draft	37"	0,94 m
Bridge Clearance	7'8"	2,34 m
With Optional Arch	10'0"	3,05 m
Deadrise @ Transom	18 °	
Dry Weight (approx.)	13,500 lbs	6122,45 kg
Cabin Headroom	6'5"	1,96 m
Sleeping Capacity	6	
Fuel System	150 gal	567,75 L
Water System	56 gal	211,96 L
Waste System	37 gal	140,05 L



Carver 532 Montego

STANDARD EQUIPMENT

Helm Equipment

Engine synchronizer
Electric/hydraulic trim tabs
Cigar lighter
Compass
Engine hour meters
Pilot windshield wiper

Exterior

Welded SS bow and safety rails
Bottom paint, anti-fouling
SS deck hardware including 2-8" bow cleats, 4-8" springline cleats, 2-10" stern cleats and 1-10" anchor cleat
Weather-sealed deck hatch with screen and hatch adjuster
Navigation lights (USCG/NMMA approved)
Command bridge with helm, seating, skiff windshield and storage
Teleflex console instrumentation includes back-lighted fuel gauge, oil and temperature gauges, tachometers and voltmeter
Anti-skid fiberglass decks
Self-bailing cockpit
Fiberglass swim platform with ladder
Cockpit wet bar with bottle and glass storage

Galley and Head

Pressurized hot/cold water system
45 gallon fresh water tank
11 gallon water heater
2-burner recessed alcohol/electric stove
Single SS galley sink
Dual-voltage refrigerator/freezer
Mirrored vanity with SS sink
Self-contained, dockside discharge marine head
37 gallon holding tank
Pressurized hot/cold shower

Functional/Safety

Windows, tinted with screens
Halon fire extinguisher system
Automatic, bilge pump (2)
Gravity bilge ventilation
Single - trumpet electric horn
Carbon monoxide monitoring system
Galvanic isolator
Shipping/storage cradle
Bonding system

Electrical

12 Vdc battery (2)
12 Vdc cabin lighting
Dockside wiring, 30A, 110 Vac with 50 ft. shore cable
12 Vdc wiring with magnetic breakers
Exterior courtesy lights
110 Vac receptacles located throughout

Interior

Salon mini-blinds
Dinette converts to double berth
Forward stateroom with double berth
Private mid-cabin
Color-coordinated carpeting, draperies and upholstery
Plush, stain and soil-resistant 100% nylon carpeting
Fully lined 100% cotton drapes protected by Scotchgard

OPTIONAL EQUIPMENT

Helm Equipment

7" electric remote spotlight
Dual - trumpet electric horn
Electric windshield wiper (companion)
Tilt steering

Galley, Interior & Head

Grey water holding tank
Microwave
2-burner recessed propane stove
Shore water connection
Blender
Stereo cassette w/AM-FM radio
Leads for stereo
Air conditioning with reverse cycle heat
Engine heat exchanger
Water tank monitor
Decorator pillow (6)
Crown electric head with macerator
Electric flush head
Overboard discharge system

Weather Covers

Camper top with boot
Convertible top with enclosure
Convertible top with boot

Electrical

6.5 kW gasoline generator
Dual dockside 30A, 110 Vac
Heavy-duty battery (2)
20A battery charging system
Dockside adaptor(s)

Exterior

Bow pulpit
Cockpit pressure seawater washdown
Wire for windlass
Icemaker
Windlass
Electronics arch
External sea water strainers
Internal sea water strainers
Heavy-duty gunwale molding
Cockpit and bridge exterior carpet
Hand shower in cockpit

Propulsion

Twin Stern Drive - Gas
5.7 Bravo II MerCruiser
7.4 Bravo I MerCruiser
570 Volvo DP
740 Volvo DP
Twin Stern Drive - Diesel
AD41 Volvo DP
Twin V-Drive Inboard - Gas
454 CID Crusader
740 Volvo
FWC MerCruiser, Crusader, Volvo
Fuel tank selector valves
Spare props and shaft

Safety and Miscellaneous

4 lb. fire extinguisher
Loading charge
Shrink wrap

For more information on the 532 Montego, see your Carver dealer. We also invite you to visit our production facilities in Pulaski, WI. Call toll free 800/558-8190. (Wisconsin 800/242-4546; Canada 800/351-0644).

Information accurate at time of printing. Carver Boat Corporation reserves the right to change without notice: price, color, materials, equipment specifications or models. Models may also be discontinued without obligation to previous purchasers. All Carver Yachts and Cruisers carry a limited warranty. See your dealer for current specifications.

CARVER

Carver Boat Corporation
Industrial Drive
Pulaski, Wisconsin 54162
414/822-3214

POWER BY



Copyright 1990 Carver Boat Corporation.