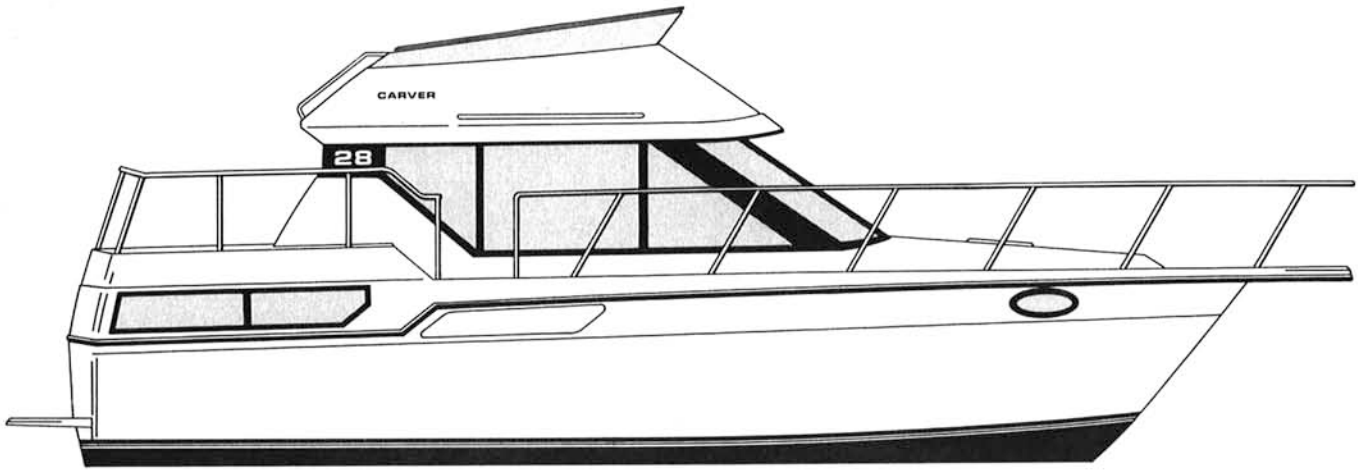


28 Aft Cabin



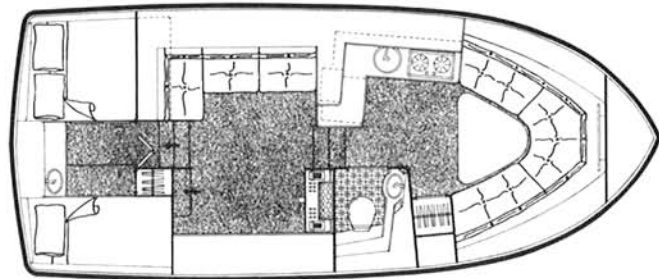
The all new Carver 28 Aft Cabin definitely follows suit with her sister ships, the 33, 36, 38 and 42 Aft Cabins. Her 11' 10" beam provides more amenities than you'd imagine on a 28 footer. The master stateroom aft has sleeping accommodations for three with both a double and single berth, and for your convenience, there's a vanity with sink. Her galley has a 2-burner electric/alcohol stove and a dual voltage

refrigerator/freezer, adjacent you'll find a comfortable dinette. And in the salon you'll find one of your most favorite features, large windows forward...What a view!

The 28 Aft Cabin, she's the newest member of the Carver Aft Cabin Family. If you haven't seen her in person, she's well worth a visit.

SPECIFICATIONS

| | | |
|-------------------------|--------------|------------|
| LOA w/platform | 30' 2" | 9,20 m |
| LOA w/platform & pulpit | 32' 9" | 10,03 m |
| Beam | 11' 10" | 3,38 m |
| Draft | 35" | 0,89 m |
| Bridge Clearance | 11' 6" | 3,54 m |
| With Optional Canvas | 14' 8" | 4,51 m |
| Deadrise @ Transom | 16° | |
| Dry Weight (approx.) | 11,700 lbs | 5307,12 kg |
| Cabin Headroom | 6' 2" | 1,89 m |
| Sleeping Capacity | 6 | |
| Fuel System | 162 U.S. gal | 613,22 L |
| Water System | 51 U.S. gal | 193,05 L |
| Waste System | 20 U.S. gal | 75,71 L |



Carver 28 Aft Cabin

STANDARD EQUIPMENT

Helm Equipment

Engine synchronizer
Electric/hydraulic trim tabs
Cigar lighter
Compass
Engine hour meters
Teleflex console instrumentation includes back-lighted fuel gauge, oil and temperature gauges, tachometers and voltmeter

Exterior

Welded SS bow and safety rails
Bottom paint, anti-fouling
SS deck hardware including 2-10" bow cleats, 2-8" springline cleats, 2-10" stern cleats and 1-10" anchor cleat
Weather-sealed deck hatch with screen and hatch adjuster
Navigation lights (USCG/NMMA approved)
Command bridge with helm, seating, venturi windshield and storage
Non-skid fiberglass decks
Heavy-duty gunwale molding
Fiberglass bow pulpit

Galley and Head

Pressurized hot/cold water system
40 gallon fresh water tank
11 gallon water heater
2-burner electric/alcohol stove
Single SS galley sink
Dual-voltage refrigerator/freezer
Mirrored vanity with SS sink
Self-contained, dockside discharge marine head
20 gallon holding tank

Functional/Safety

Windows, tinted with screens
Halon fire extinguisher system
Automatic, bilge pump (3)
Gravity bilge ventilation
Dual recessed electric horn
Carbon monoxide monitoring system
Galvanic isolator
Bonding system
Fuel selector valves

Electrical

12 Vdc, 100A battery (2)
Cabin lighting, 12 Vdc
Dockside wiring, 110 Vac, 30A with 50 ft. shore cable
12 Vdc wiring with hydraulic magnetic breakers
Exterior courtesy lights
110 Vac receptacles located throughout

Interior

V-shaped dinette converts to berth
Color-coordinated carpeting, draperies and upholstery
Plush, stain and soil-resistant 100% nylon carpeting
Fully lined 100% cotton drapes protected by Scotchguard
Convertible sofa

OPTIONAL EQUIPMENT

Helm Equipment

Lower helm station & controls with pilot seat
Electric remote spotlight

Galley, Interior & Head

Grey water holding tank
Microwave
Blender
Propane stove
Shore water connection
Stereo cassette w/AM-FM radio
Air conditioning with reverse heat cycle
Engine heat exchanger
Water tank monitor
Decorator pillow (6)
Salon chair
Crown electric head with macerator
Overboard discharge system

Electrical

3.0 kW gasoline generator
Dual dockside 110 Vac, 30A
20A battery charging system
Dockside adaptor(s)

Exterior

Full canvas with exterior carpet
Pressure seawater washdown
Windlass with remote drop & lift
Fiberglass swim platform with ladder
External sea water strainers
Internal sea water strainers
Fender rack (4)
Bridge cover

Propulsion

Twin Inboard - Gas
5.7L MerCruiser
305 CID Crusader
350 CID Crusader
501 Volvo
570 Volvo
Twin Inboard - Diesel
TAMD31 Volvo
FWC MerCruiser, Crusader, Volvo
Spare props and shaft

Safety and Miscellaneous

4 lb. fire extinguisher
Loading charge
Shrink wrap
Storage cradle

For more information on the 28 Aft Cabin, see your Carver dealer. We also invite you to visit our production facilities in Pulaski, WI. Call toll free 800/558-8190. (Wisconsin 800/242-4546; Canada 800/351-0644).

Information accurate at time of printing. Carver Boat Corporation reserves the right to change without notice: price, color, materials, equipment specifications or models. Models may also be discontinued without obligation to previous purchasers. All Carver Yachts and Cruisers carry a limited warranty. See your dealer for current specifications.

CARVER

Carver Boat Corporation
Industrial Drive
Pulaski, Wisconsin 54162
414/822-3214

POWER BY

**VOLVO
PENTA®**

**CERTIFIED
NMMA®**