

36 Mariner Setup

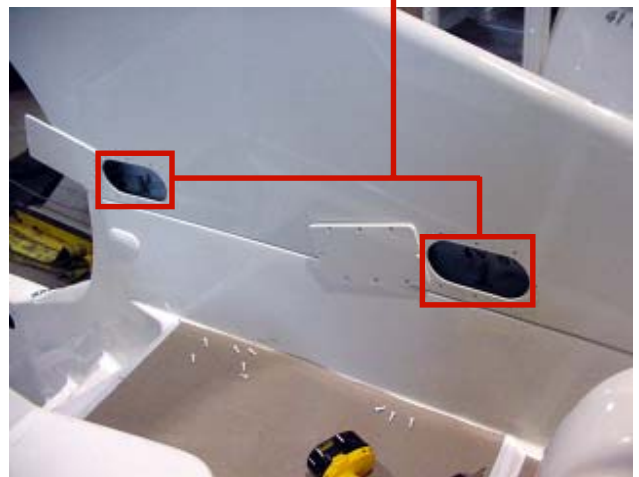
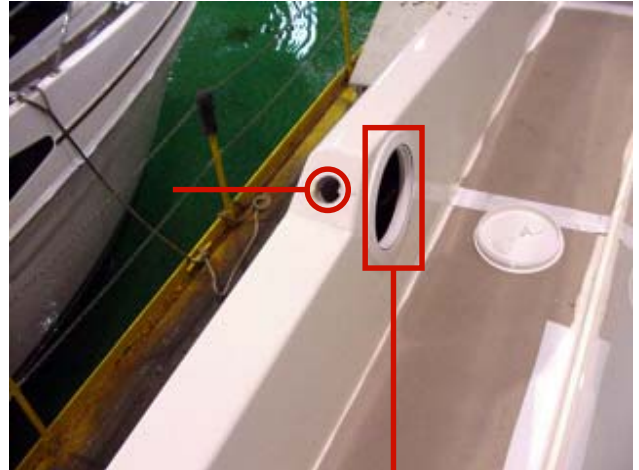
1. Install the props and drain plug.
2. Install the electronics arch. The arch is connected to the bridge by six bolts: two mounted in each side of the bridge, and one in each forward foot of the arch.



- a. Clean around the studs for the arch.
- b. Put silicone around the studs.
- c. Lower the electronics arch so that it is a few inches above its installation location. Make sure the mounting bolts in the bridge line up with the holes in the bottom of the arch.



- d. Remove the arch mounting bolt access plates: there are two on each side of the base of the arch and one on each side of the bridge bulwark.



- e. Pull the ends of both the bridge wires and arch wires out through their respective access holes (see photo on next page).

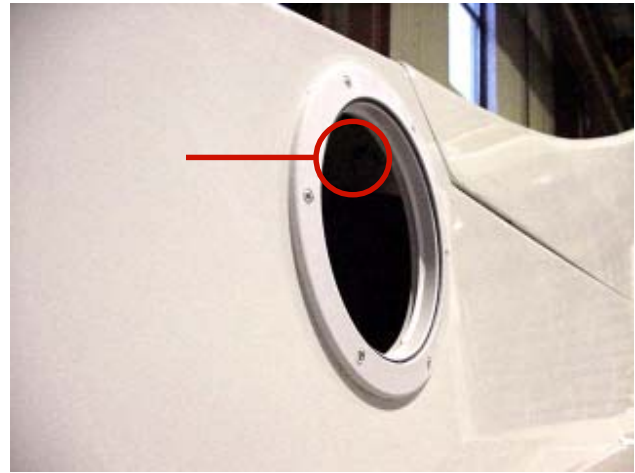


f. Push each forward foot of the arch down so that its bolt can enter the mounting hole for it. Hold the forward feet in that position while lowering the rest of the arch onto the bridge mounting bolts.

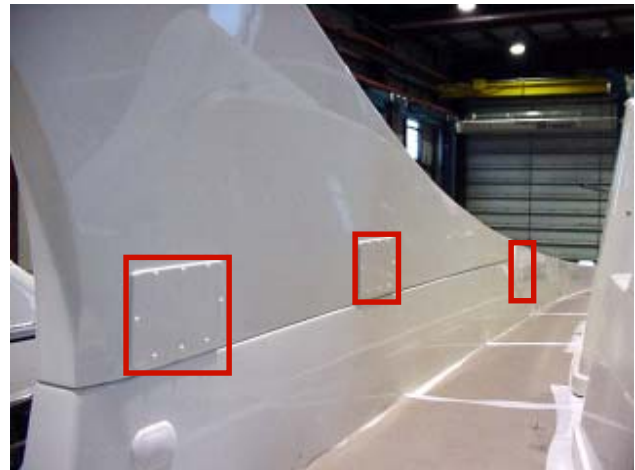
g. Put plate, flat washer, lock washer and nut on stud, then apply Tuff Gel.



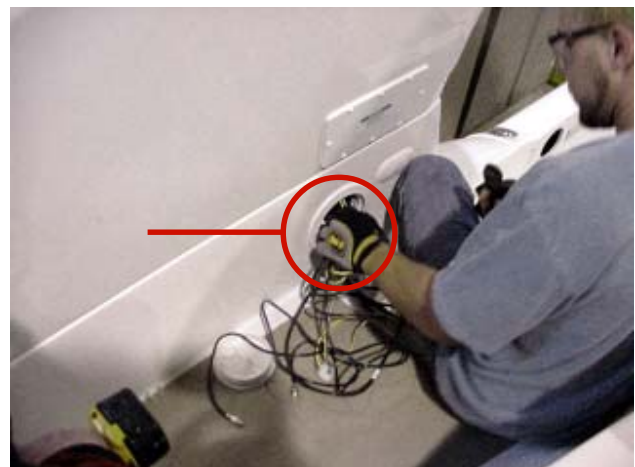
h. On the forward foot of the arch, put bolt with plate, flat washer and lock washer through pie plate (see photo in next column).



i. Reinstall the arch mounting bolt access plates except for the starboard aft plate.



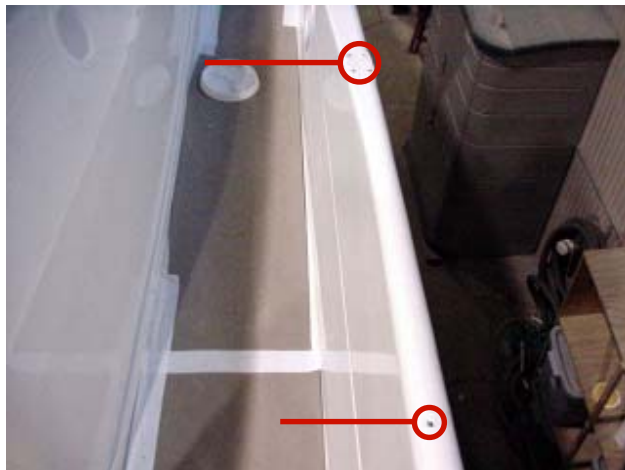
j. Route the arch wires through the bottom hole inside the arch, then out through the lower access hole.



- k. Connect the arch wires to the corresponding bridge wires. Tuck the wires back into the access hole and reinstall the two access plates.



1. Cosmetically seal around the arch base.
3. Install the aft port and starboard deck rails. Put silicone around the bolt holes at the base of the rails. Apply Tuff Gel on the arch fasteners.



4. Install the bridge windshield using the hardware and foam tape provided.
- a. Place the foam tape over the screw holes where the windshield will set.
- b. Set the starboard front windshield in place.

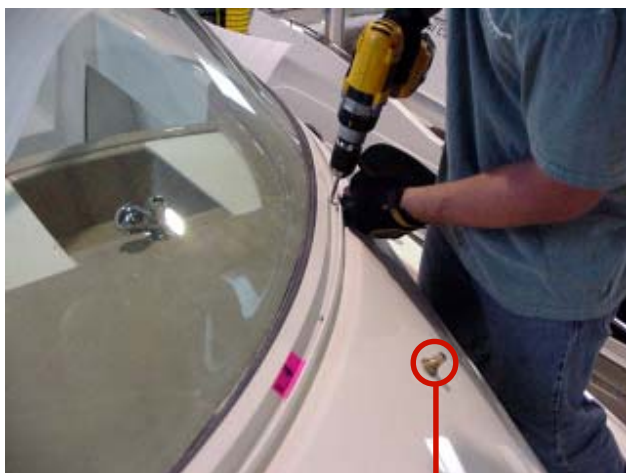
- c. Apply silicone to the windshield screws. Install the screws for the starboard front windshield.



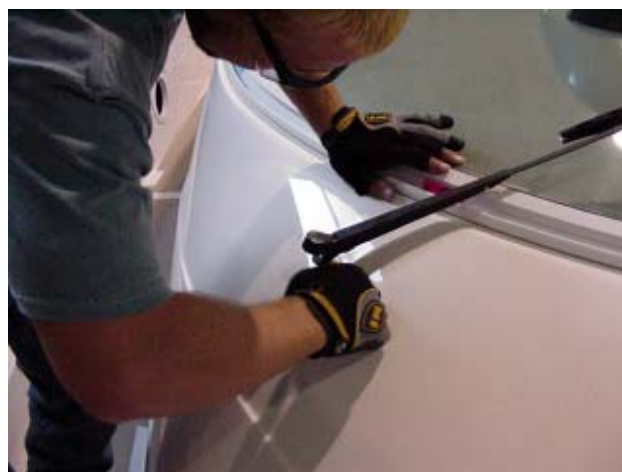
- d. Locate the guide on the starboard front windshield frame. Set the port front windshield in place by sliding it into the guide.



- e. Apply silicone to the windshield screws. Install the screws for the port front windshield (see upper photo below).
- f. Locate the port and starboard windshield wiper mounting studs.



- g. Slide each wiper over its mounting stud (see photo in next column).



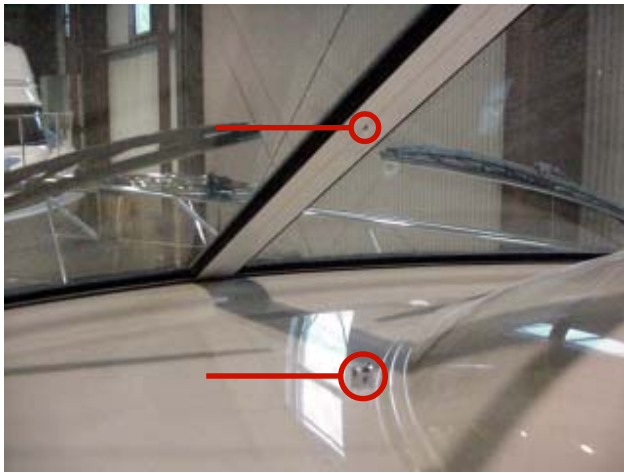
- h. Tighten the set screw that secures each wiper to its mounting stud.



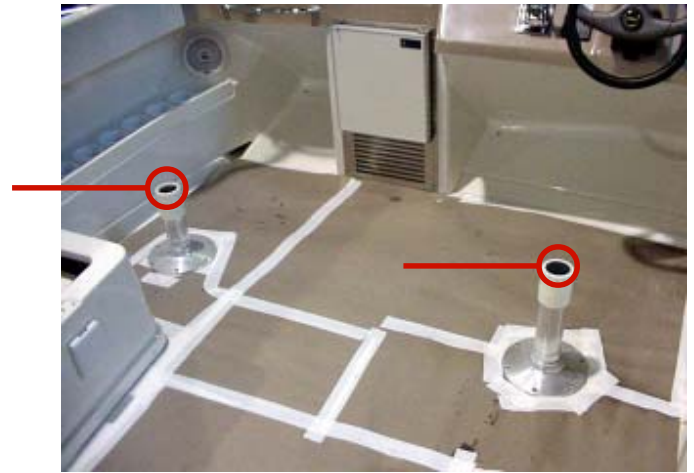
- i. Install the windshield support bar (see photos on next page):

Attach the bottom of the support bar to the helm-mounted bracket.

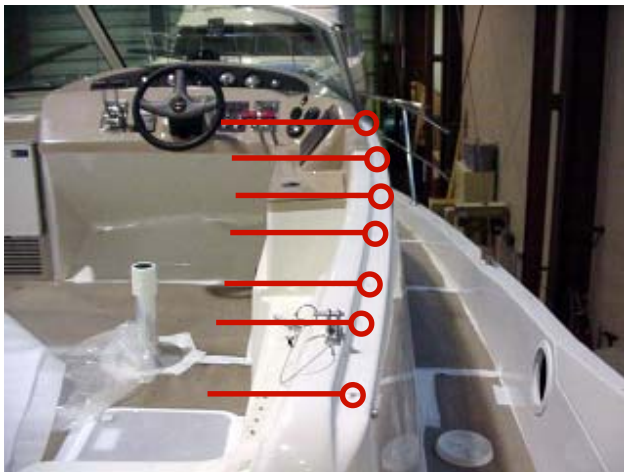
Install the screw through the top of the support bar into the windshield frame.



- j. Locate the guide on each aft edge of the front windshield frame (the port windshield guide is shown in the photo). Set each side windshield in place by sliding it into the guide.
- k. Apply silicone to the windshield screws. Install the screws for both side windshields. Install the rubber gasketing for the windshield; follow the directions in the MAC kit.



- b. Install the three bridge bench seats (see photos below and on next page).



- 5. Install all exterior seats:
 - a. Install the helm and companion chairs onto their bases (see photo in next column).





c. Install the foredeck bench seat.



7. Install the bridge wet bar sink spigot.



6. Install the port and starboard cockpit bolsters (see photo below and in next column).



8. Install the canvas (if it was ordered).

